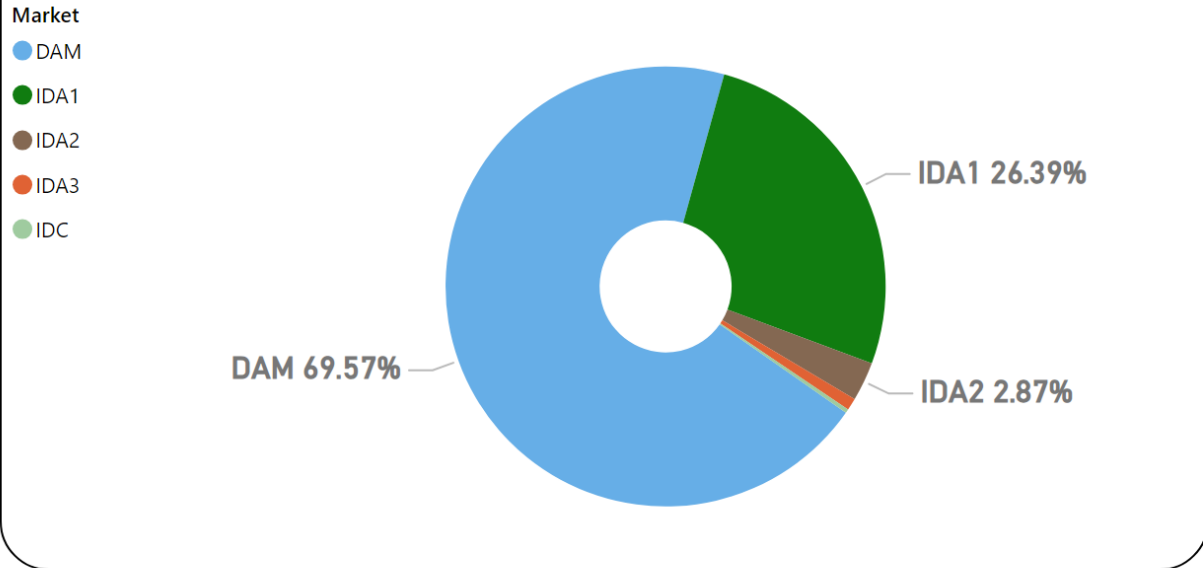


MMU Weekly Market Summary Report

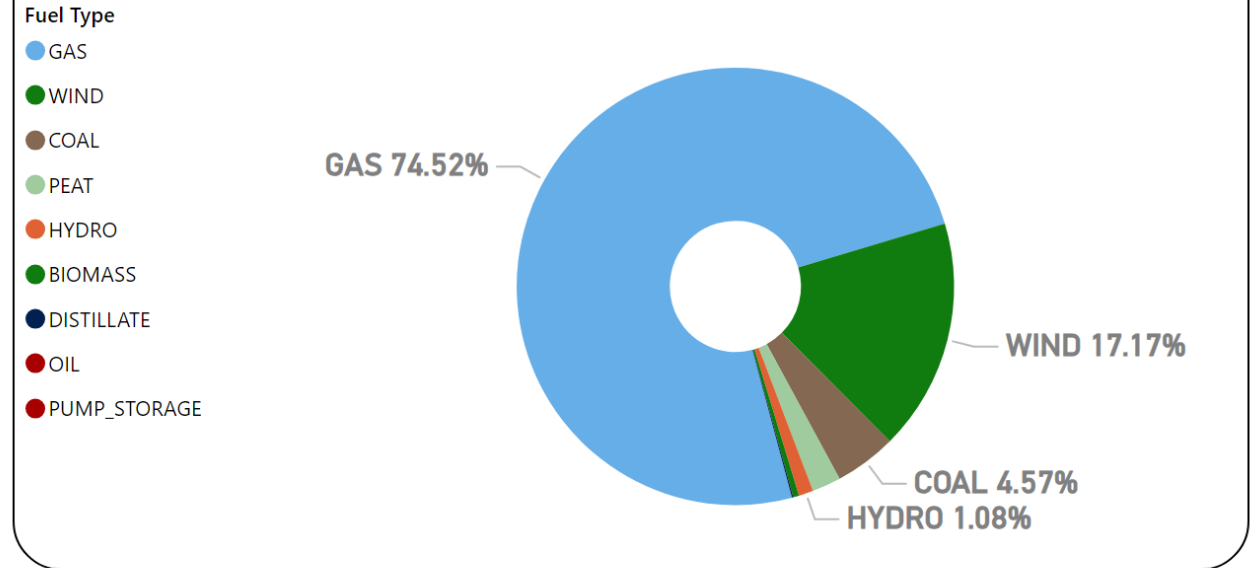
- Week Commencing 06 May 2024

Weekly Volume by Market



Source: SEMO PX

Weekly Fuel Mix



Source: SEMO PX

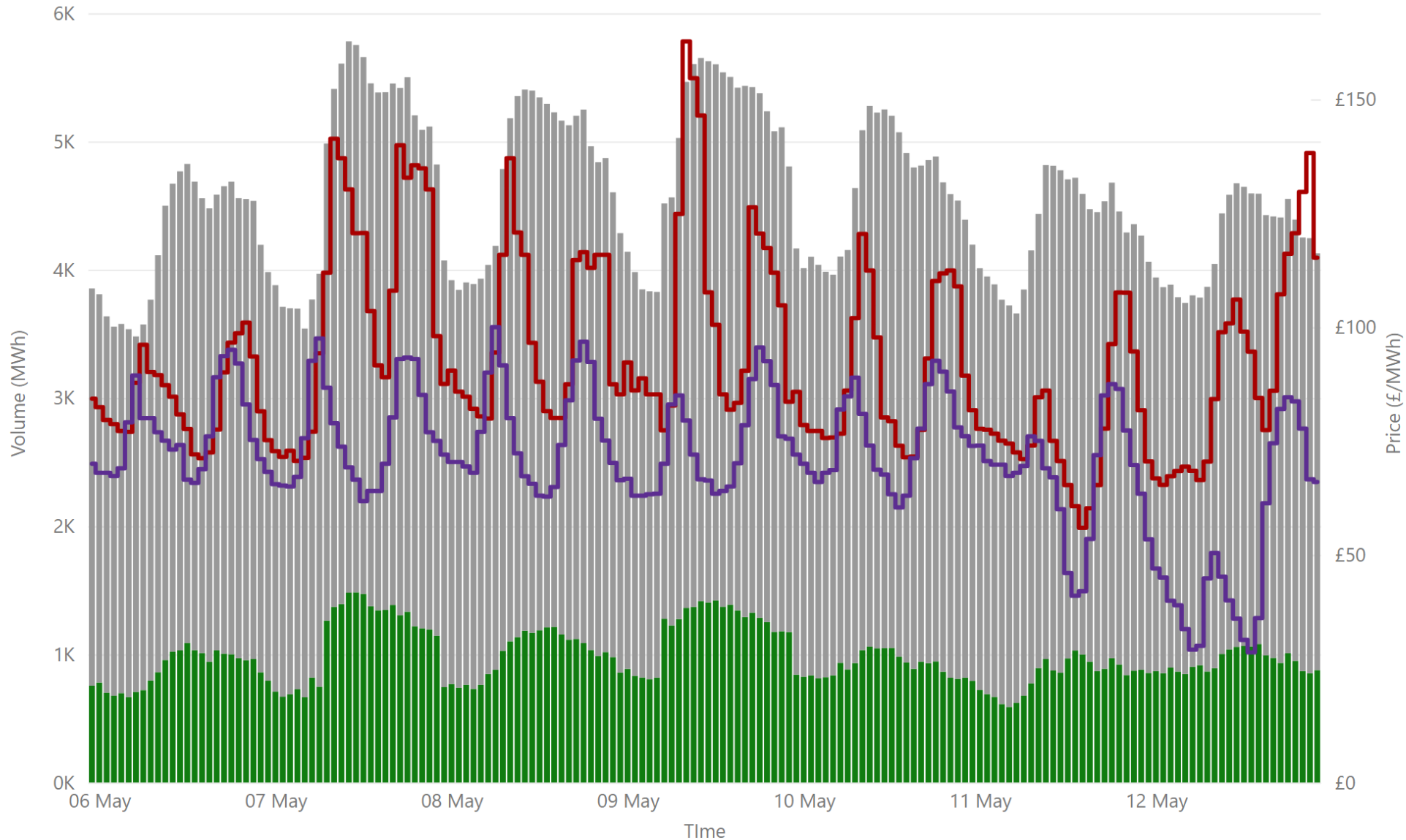
Summary Table

| Date | Daily System Demand (MWh)* | Daily Dam Price (£/MWh)** | Daily Actual Wind (MWh)* | Daily Average Gas Price (p/th)*** | Daily Average Coal Price (€/t)*** | Daily Average Carbon Price (€/t)*** |
|-------------|----------------------------|---------------------------|--------------------------|-----------------------------------|-----------------------------------|-------------------------------------|
| 06 May 2024 | 99,867.00 | 84.53 | 15,920.75 | 73.30 | 109.35 | 70.04 |
| 07 May 2024 | 110,018.25 | 108.88 | 4,857.50 | 76.25 | 109.25 | 68.83 |
| 08 May 2024 | 109,739.50 | 98.97 | 10,387.00 | 74.05 | 106.00 | 70.06 |
| 09 May 2024 | 108,320.75 | 105.22 | 12,051.50 | 74.20 | 107.75 | 71.59 |
| 10 May 2024 | 103,862.25 | 89.89 | 20,327.00 | 74.20 | 106.90 | 69.73 |
| 11 May 2024 | 95,454.50 | 77.89 | 21,333.00 | 74.20 | 106.90 | 69.73 |
| 12 May 2024 | 96,171.75 | 91.49 | 5,165.75 | 74.20 | 106.90 | 69.73 |

Sources: * EirGrid ** SEMO PX *** Oil Market Journal

Weekly Day Ahead Market Summary - Week Commencing

06 May 2024



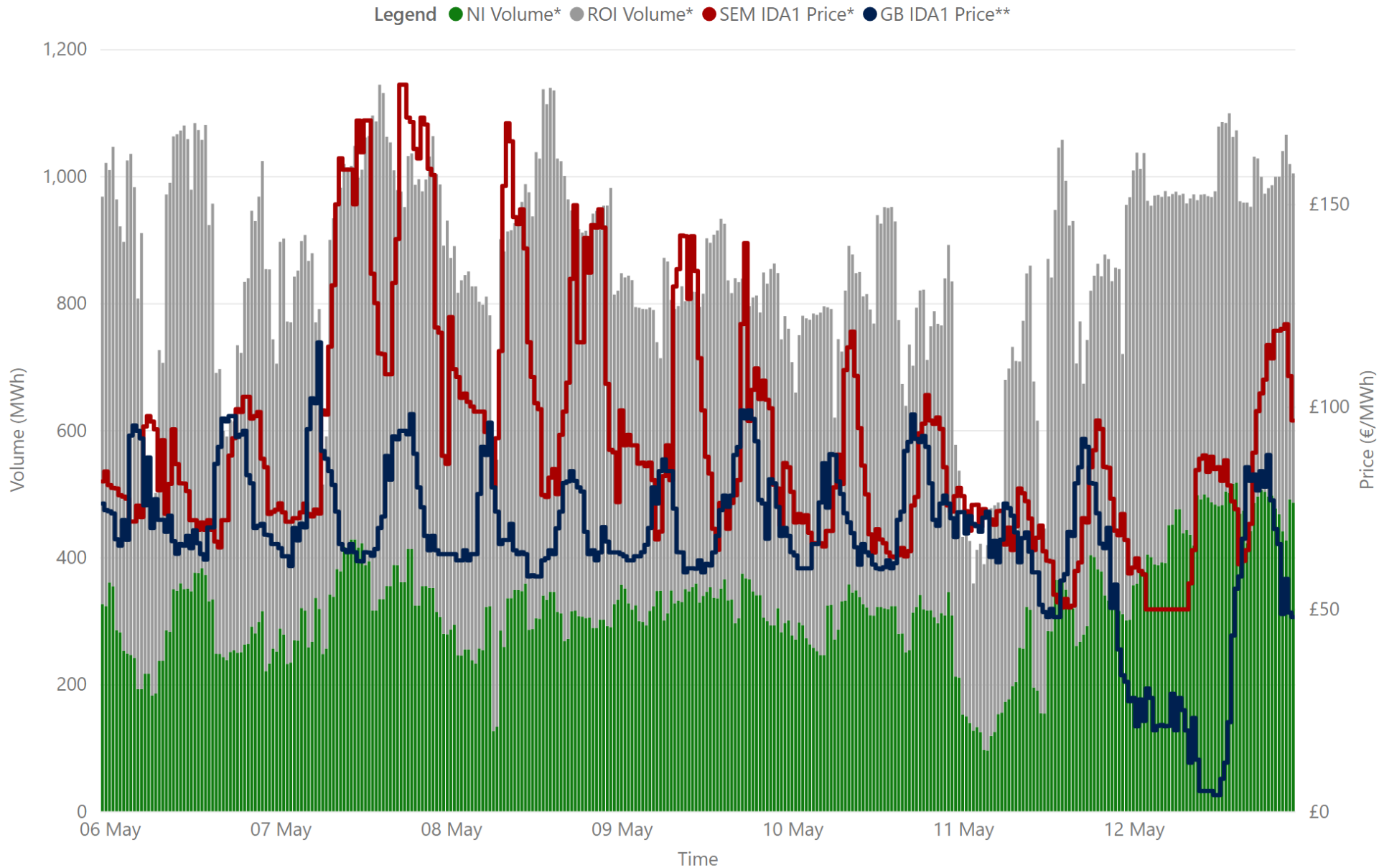
£92.74
 Weekly Average SEM DAM Price*
71.15
 Weekly Average GB EPEX Price*
£72,247,841.08
 Weekly SEM DAM Market Value*
765,444.00
 Weekly SEM DAM Volume MWh*

Legend ● NI Volume* ● ROI Volume* ● SEM DAM Price* ● GB EPEX Price*

Sources:
 * SEMO PX
 ** EPEX
 *** Nordpool

Weekly Intraday Auction 1 Summary - Week Commencing

06 May 2024



£91.70
Weekly Average SEM IDA1 Price*

£67.17
Weekly Average GB IDA1 Price**

£27,006,774.07
Weekly SEM IDA1 Market Value*

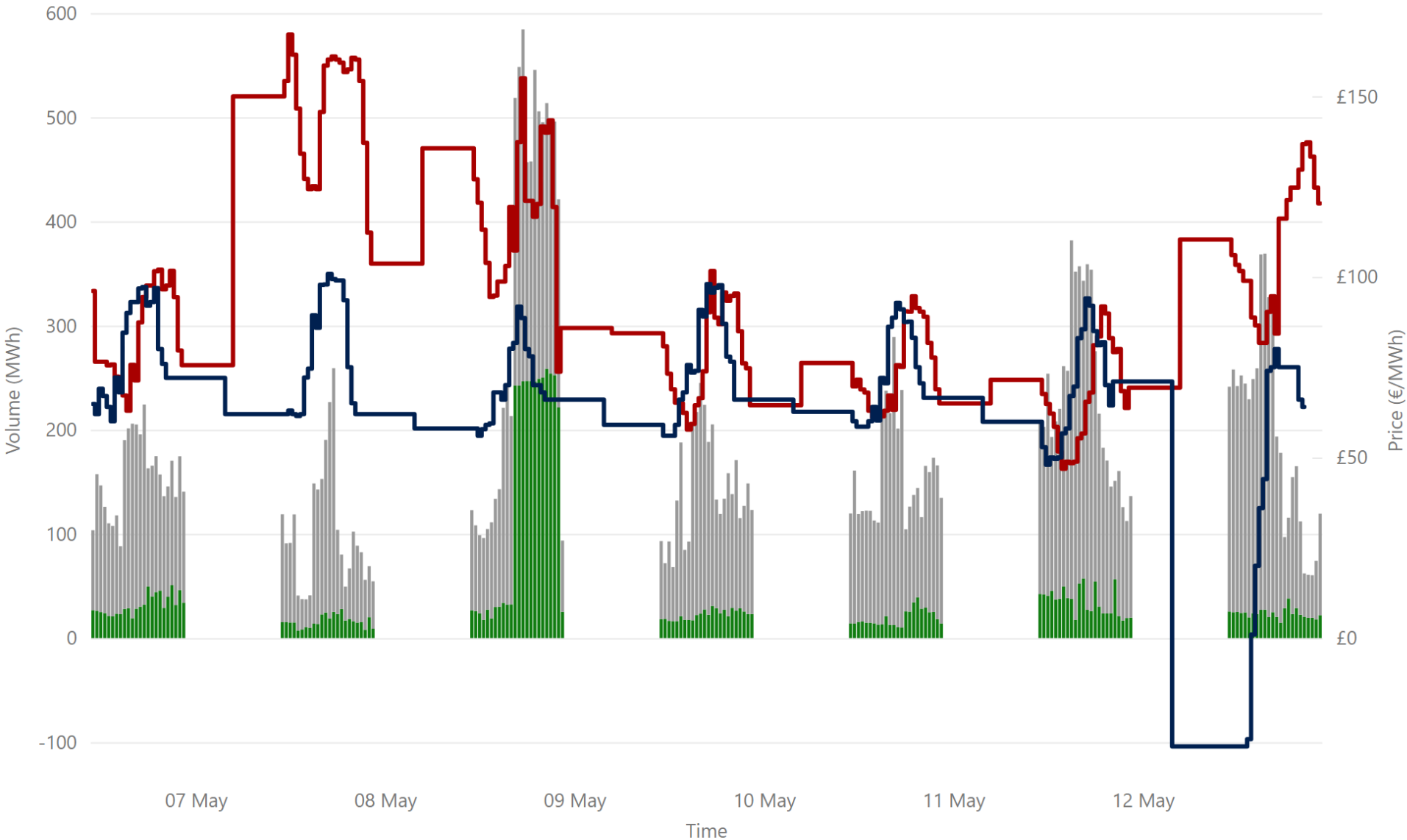
290,347.70
Weekly SEM DAM Volume MWh*

Sources:
* SEMO PX
** EPEX

Weekly Intraday Auction 2 Summary - Week Commencing

06 May 2024

Jurisdiction Volume ● NI Volume* ● ROI Volume* ● SEM IDA2 Price* ● GB Price**



£96.32
Weekly Average SEM IDA2 Price*

£68.34
Weekly Average GB IDA2 Price**

£3,016,834.01
Weekly SEM IDA2 Market Value*

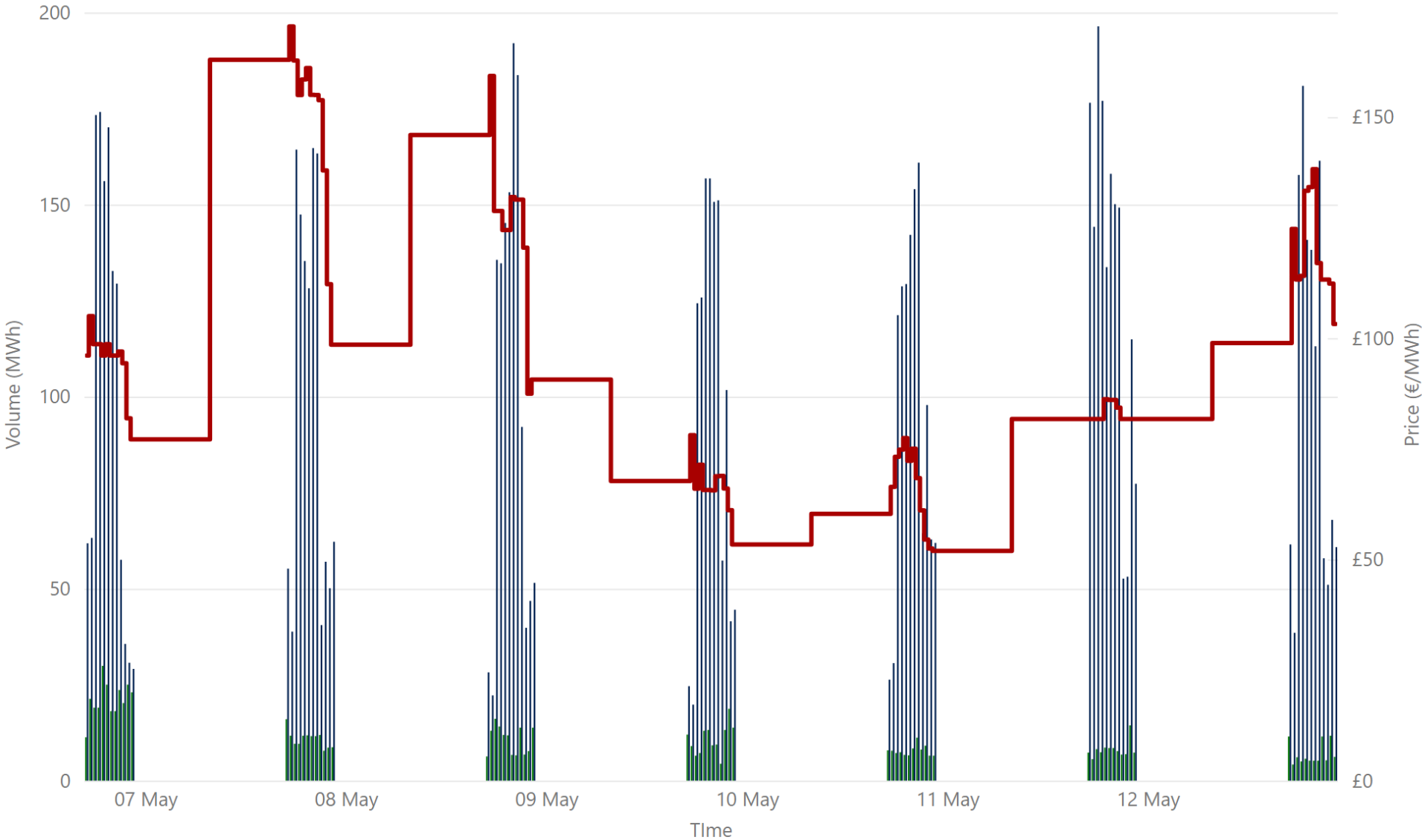
31,584.70
Weekly SEM IDA2 Volume MWh*

Sources:
* SEMO PX
** EPEX

Weekly Intraday Auction 3 Summary - Week Commencing

06 May 2024

Jurisdiction ● NI Volume* ● ROI Volume* ● SEM Price*

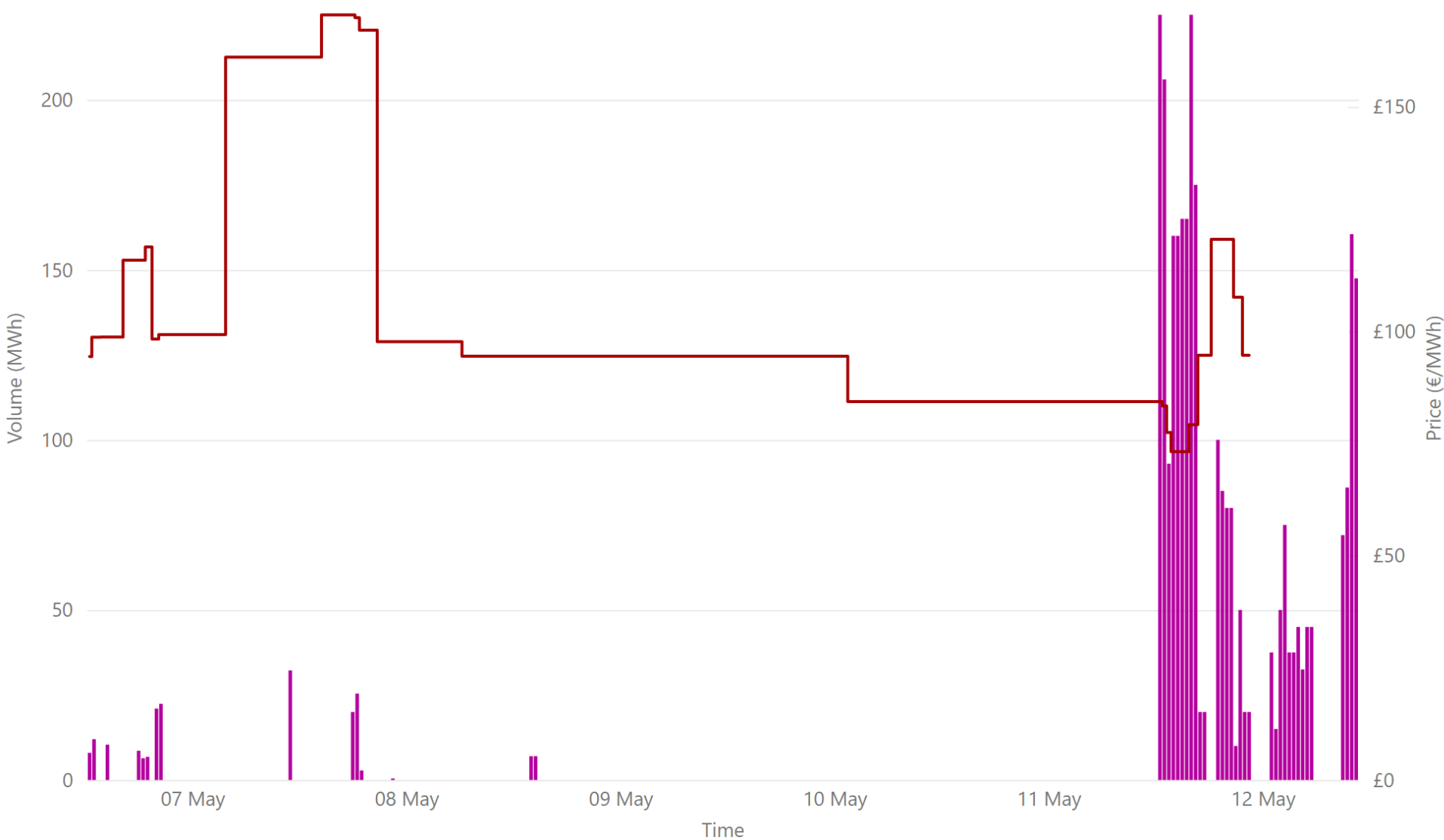


£100.26
Weekly Average SEM IDA3 Price*
£984,863.82
Weekly SEM IDA3 Market Value*
9,708.90
Weekly SEM IDA3 Volume MWh*

Weekly Intraday Continuous Summary - Week Commencing

06 May 2024

● IDC Volume* ● Weighted Average IDC Price*



£104.88
Weekly SEM IDC Average Price*

£105.31
Weekly SEM IDC Max Price*

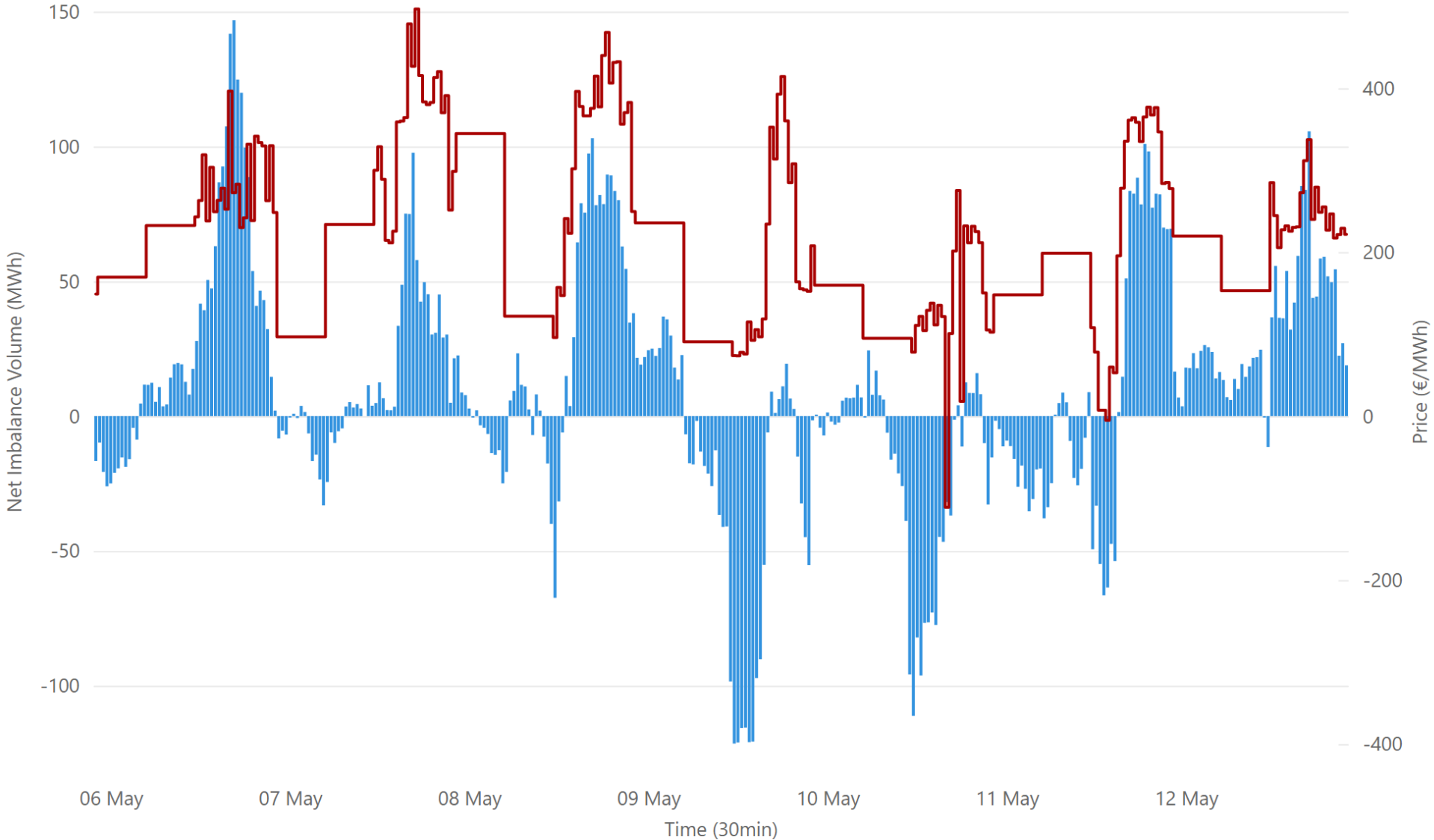
£104.43
Weekly SEM IDC Min Price*

3,135.20
Weekly SEM IDC Volume MWh*

Weekly Balancing Market 30 Minute Summary - Week Commencing

06 May 2024

● Net Imbalance Volume* ● 30 Minute Imbalance Settlement Price*

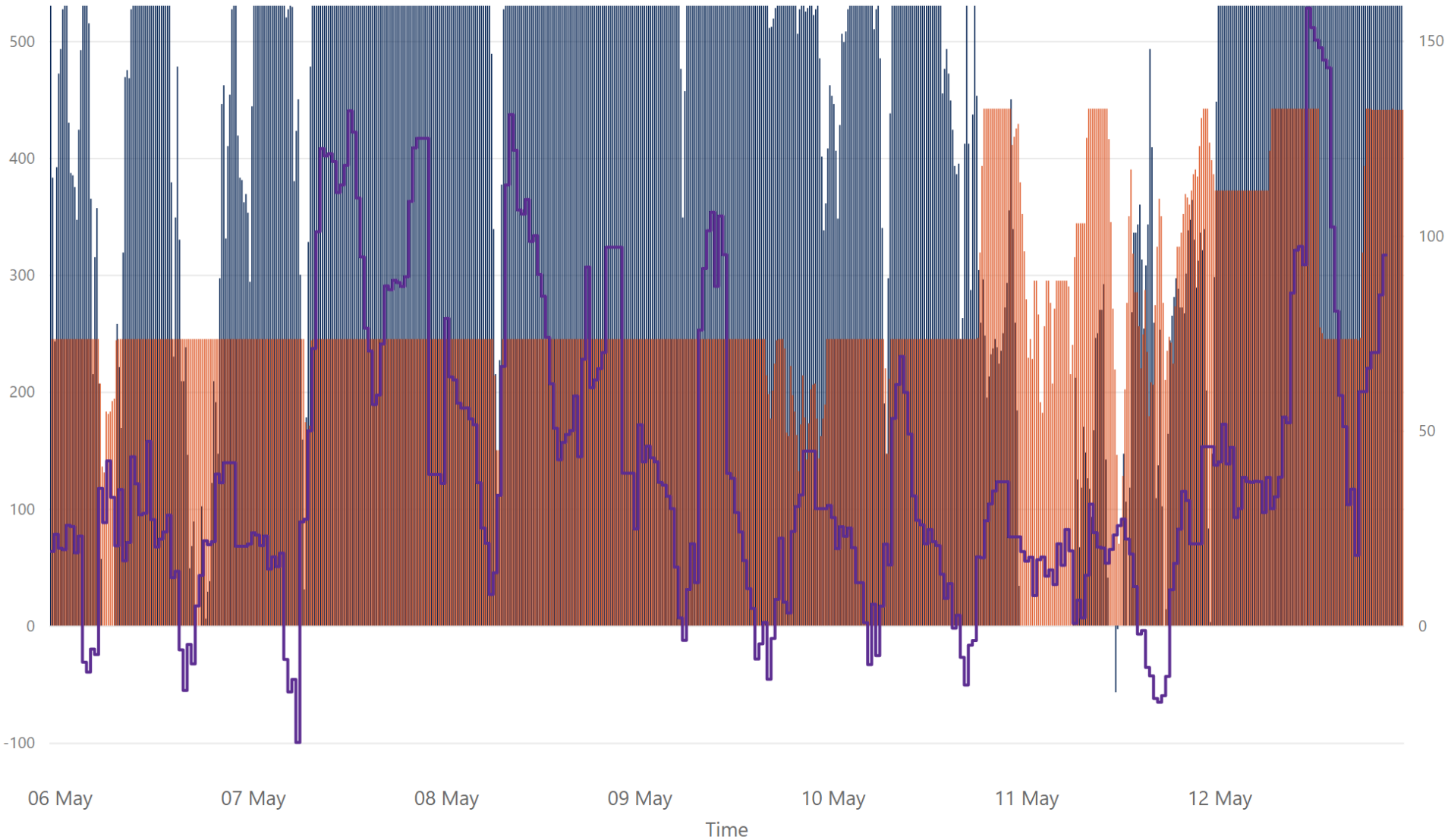


124.27
Ave 30min Imbalance Price*
€ 289.80
Max 30min Imbalance Price*
-€ 64.71
Min 30min Imbalance Price*
73.39
Max Net Imbalance Volume*
-60.72
Min Net Imbalance Volume*

Weekly Interconnection Summary - Week Commencing

06 May 2024

● EWIC Volume (MW)* ● MOYLE Volume (MW)* ● SEM-GB Spread**



184,252.00
Weekly MOYLE (MW) Import*

0.00
Weekly MOYLE (MW) Export*

184,252.00
Weekly MOYLE (MW) NET*

285,337.00
Weekly EWIC (MW) Import*

-60.00
Weekly EWIC (MW) Export*

285,277.00
Weekly EWIC (MW) NET*

Sources:
* EirGrid
** SEMO, EPEX & Nordpool

Weekly Wind Capacity Summary - Week Commencing

06 May 2024

● 15 Minute Forecast Wind (MW)* ● 15 Minute Actual Wind (MW)*



1630
Max Actual Wind (MW)*

12
Min Actual Wind (MW)*

1565
Max Forecast Wind (MW)*

25
Min Forecast Wind (MW)*