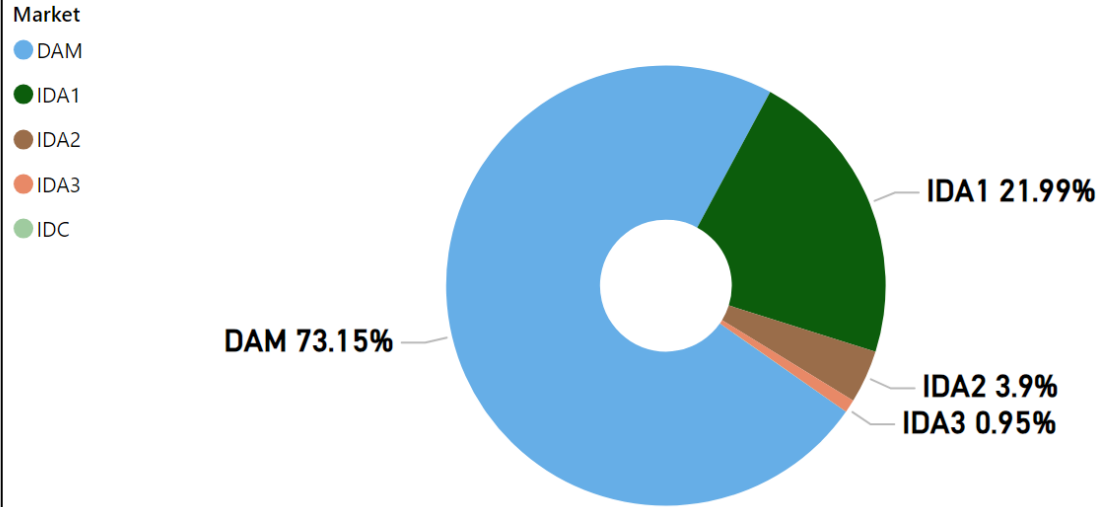


# MMU Weekly Market Summary Report

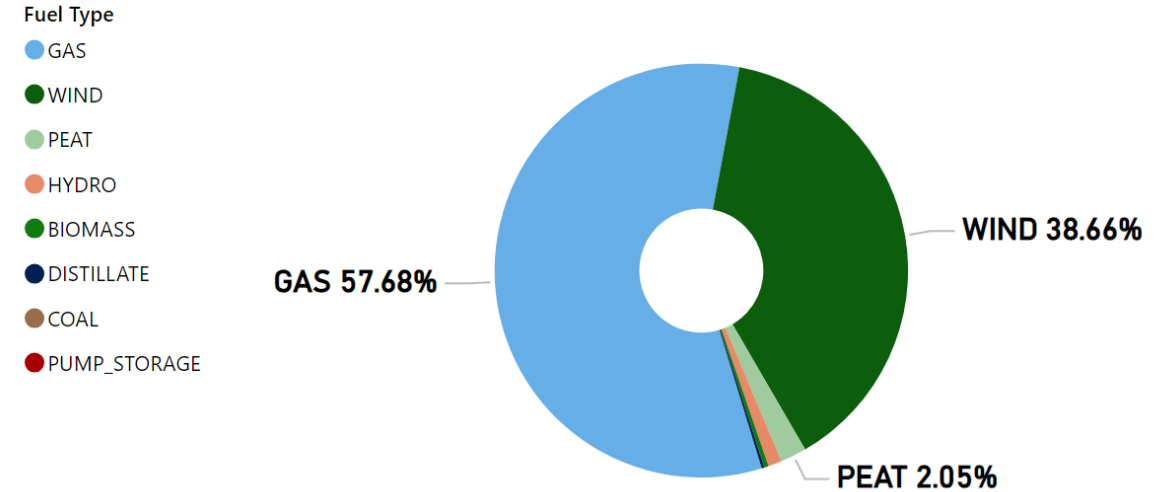
## - Week Commencing 23 December 2024

**Weekly Volume by Market**



Source: SEMO PX

**Weekly Fuel Mix**



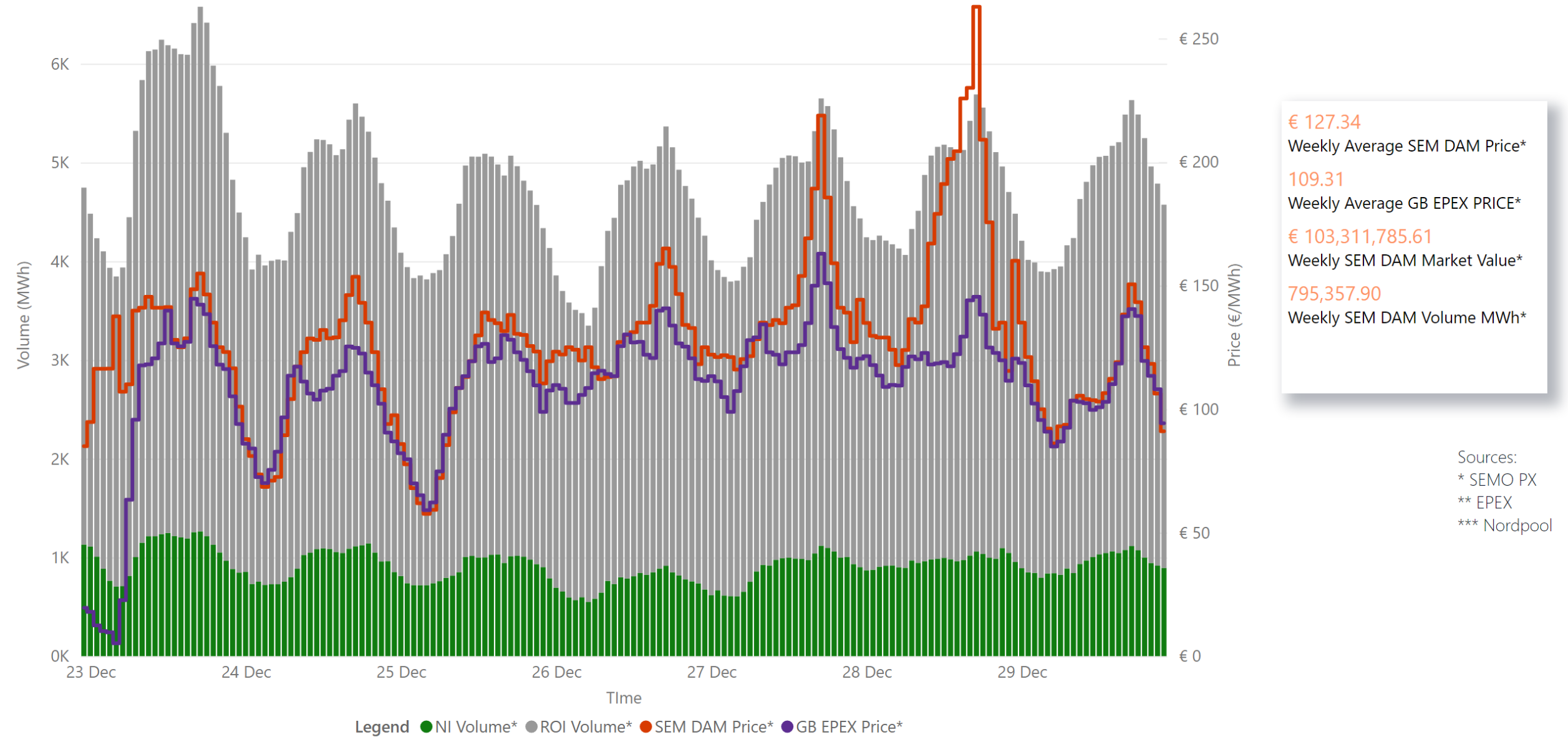
Source: SEMO PX

Summary Table

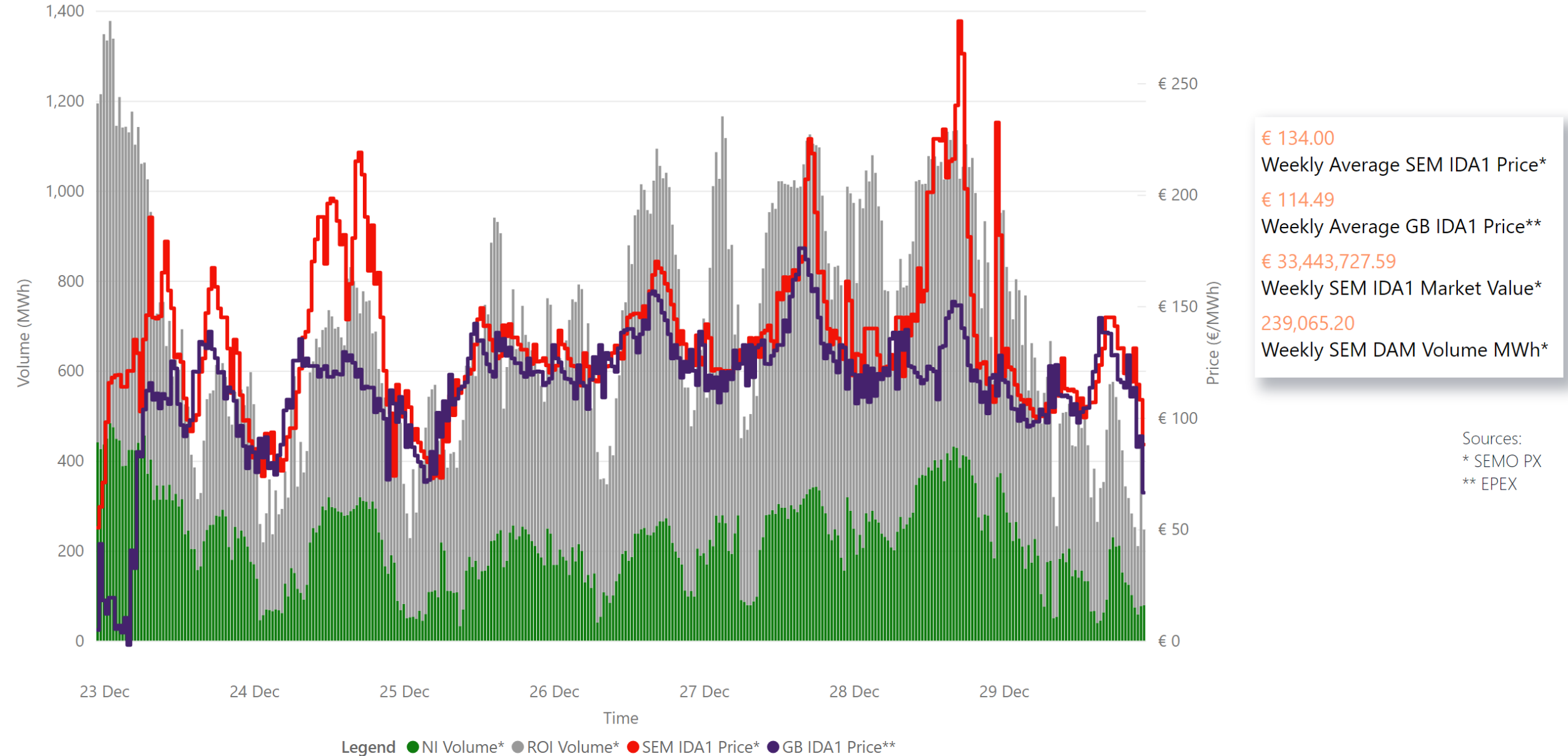
Date	Daily System Demand (MWh)*	Daily DAM Price (€/MWh)**	Daily Actual Wind (MWh)*	Daily Average Gas Price (p/th)***	Daily Average Coal Price (€/t)***	Daily Average Carbon Price (€/t)***
23 December 2024	119,587.00	129.71	57,976.25	112.30	112.30	67.69
24 December 2024	112,416.75	114.27	59,699.75	112.45	112.00	67.45
25 December 2024	103,132.25	108.31	53,491.00	112.45	112.00	67.45
26 December 2024	102,179.75	131.73	18,048.00	112.45	112.00	67.45
27 December 2024	109,374.25	144.35	11,934.50	117.93	112.25	69.63
28 December 2024	108,795.25	164.96	18,778.00	117.93	112.25	69.63
29 December 2024	104,338.75	114.61	56,909.50	117.93	112.25	69.63

Sources: \* EirGrid \*\* SEMO PX \*\*\* Oil Market Journal

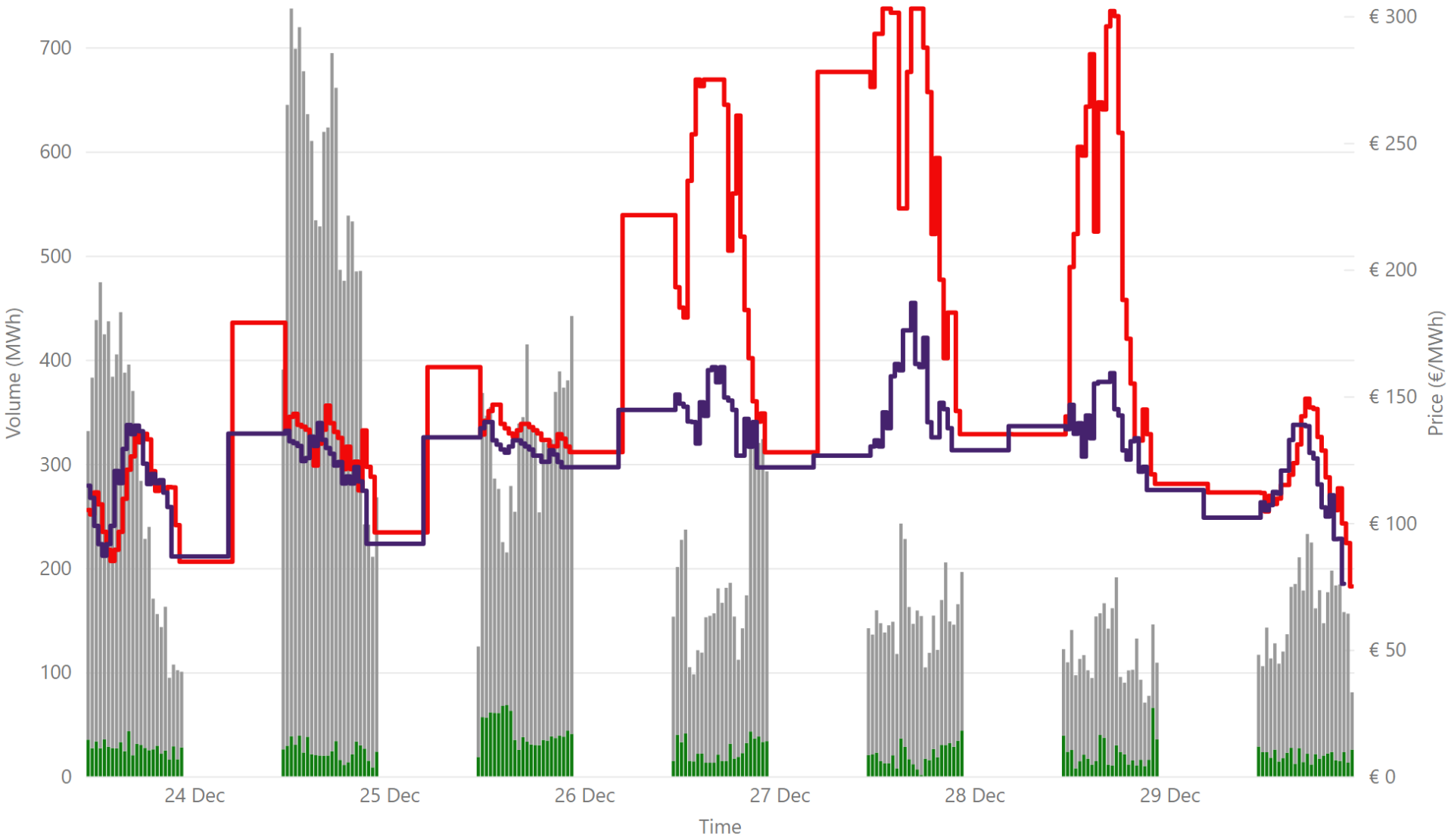
# Weekly Day Ahead Market Summary - Week Commencing 23 December 2024



# Weekly Intraday Auction 1 Summary - Week Commencing 23 December 2024



# Weekly Intraday Auction 2 Summary - Week Commencing 23 December 2024



€ 167.51  
 Weekly Average SEM IDA2 Price\*

€ 130.63  
 Weekly Average GB IDA2 Price\*\*

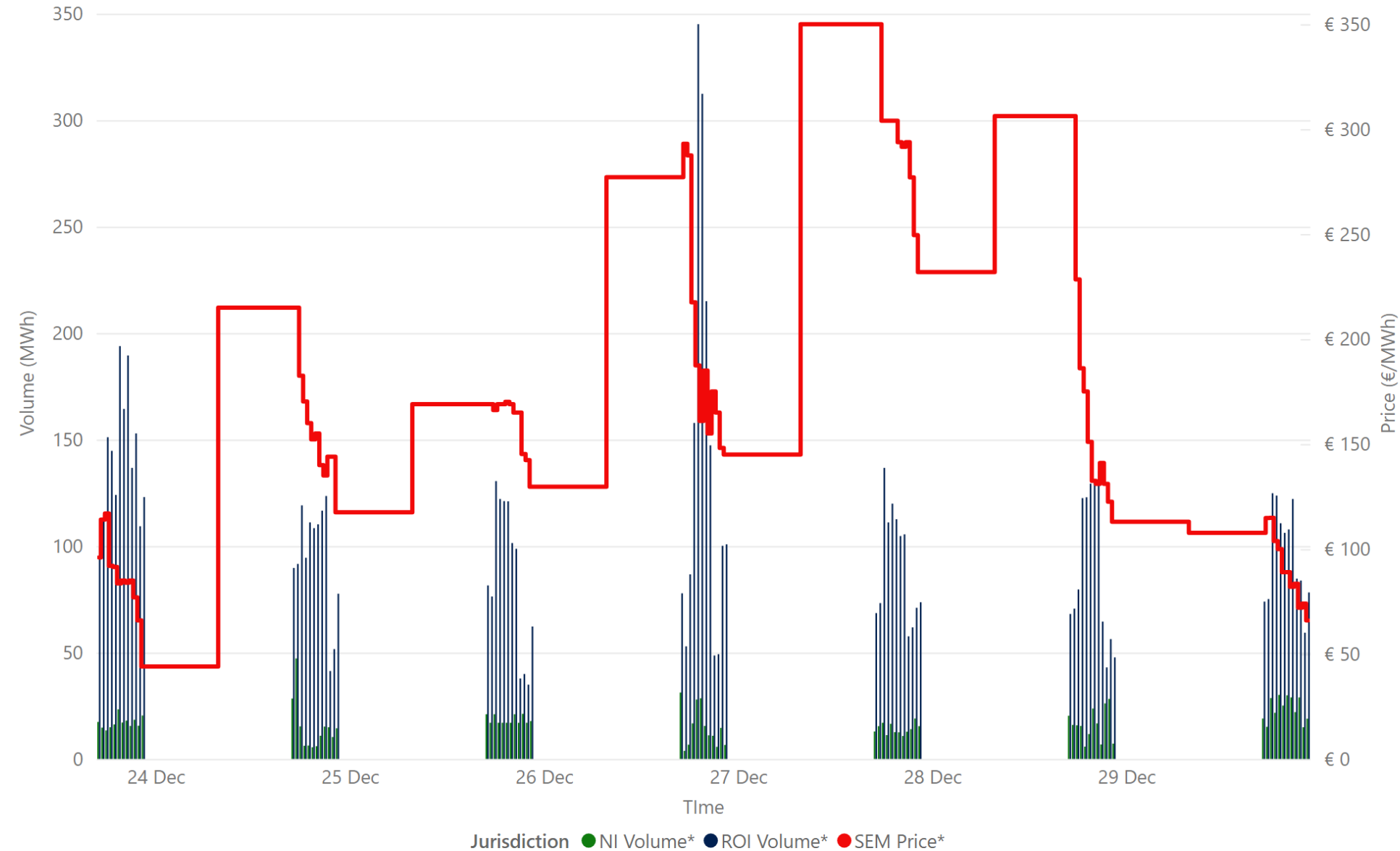
€ 6,439,843.02  
 Weekly SEM IDA2 Market Value\*

42,434.10  
 Weekly SEM IDA2 Volume MWh\*

Sources:  
 \* SEMO PX  
 \*\* EPEX

Jurisdiction Volume ● NI Volume\* ● ROI Volume\* ● SEM IDA2 Price\* ● GB Price\*\*

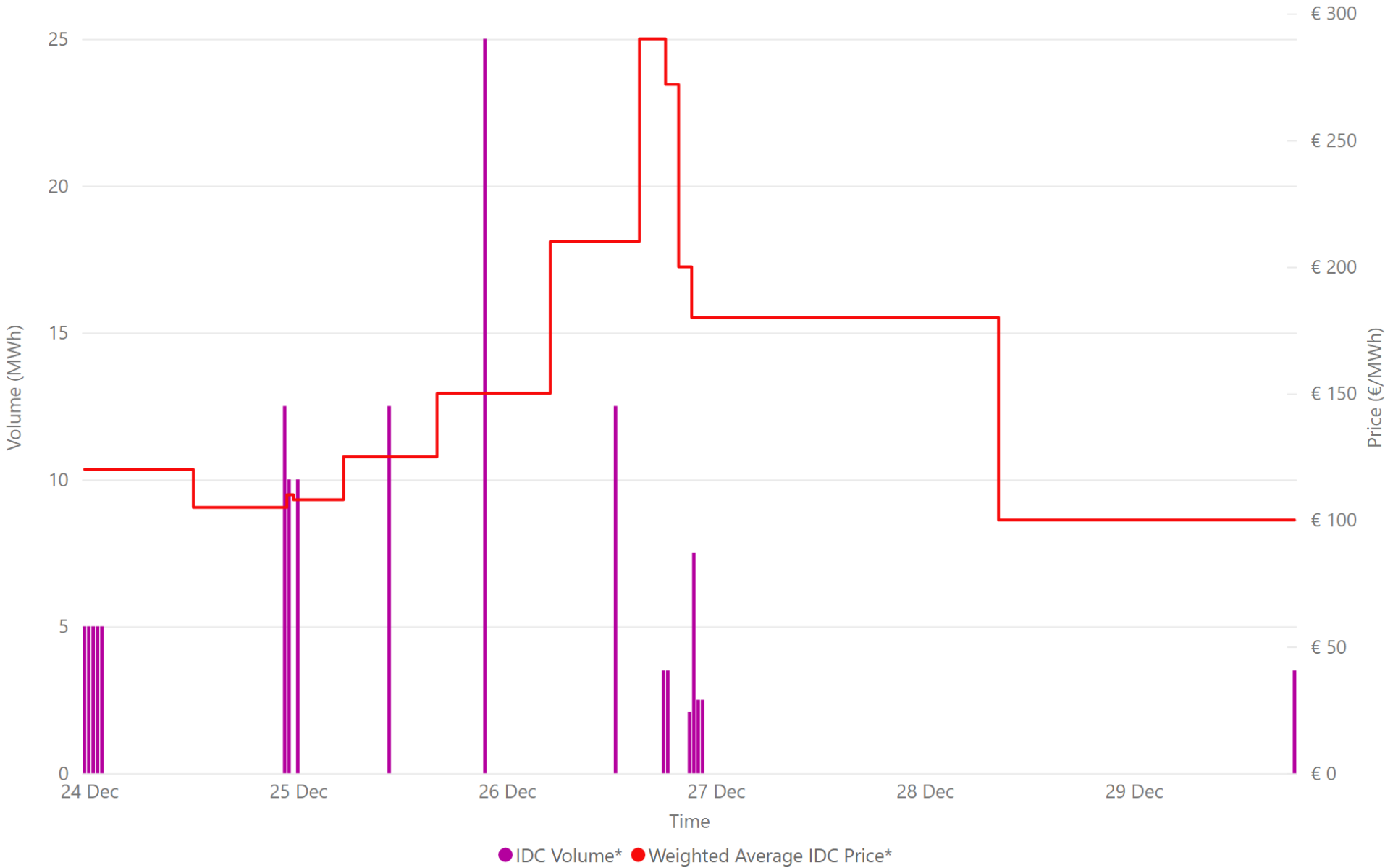
# Weekly Intraday Auction 3 Summary - Week Commencing 23 December 2024



€ 167.44  
Weekly Average SEM IDA3 Price\*  
€ 1,668,794.12  
Weekly SEM IDA3 Market Value\*  
10,309.20  
Weekly SEM IDA3 Volume MWh\*

Source: \* SEMO PX

# Weekly Intraday Continuous Summary - Week Commencing 24 December 2024



€ 156.11  
Weekly SEM IDC Average Price\*

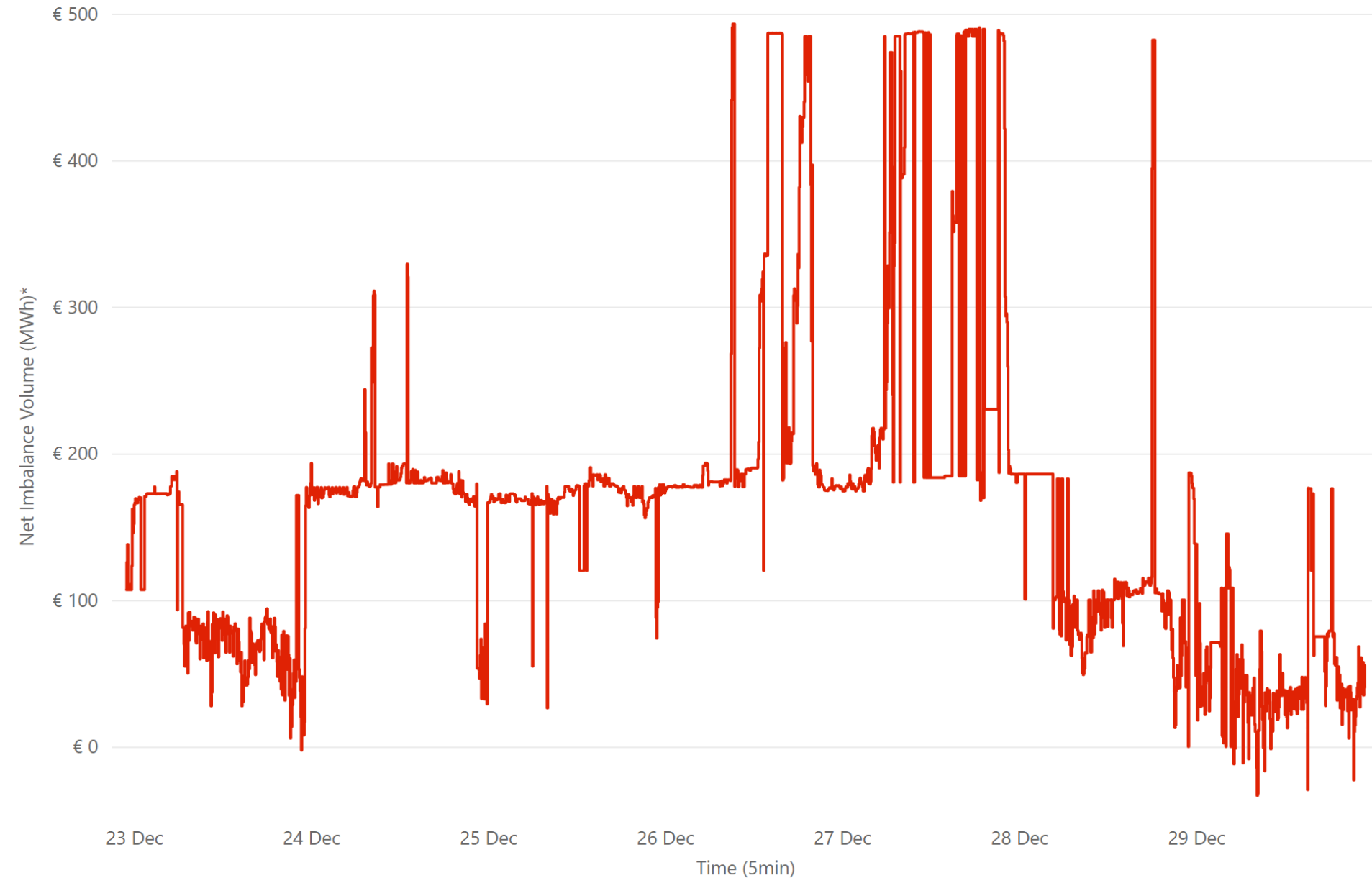
€ 290.00  
Weekly SEM IDC Max Price\*

€ 100.00  
Weekly SEM IDC Min Price\*

132.60  
Weekly SEM IDC Volume MWh\*

Source: \* SEMO PX

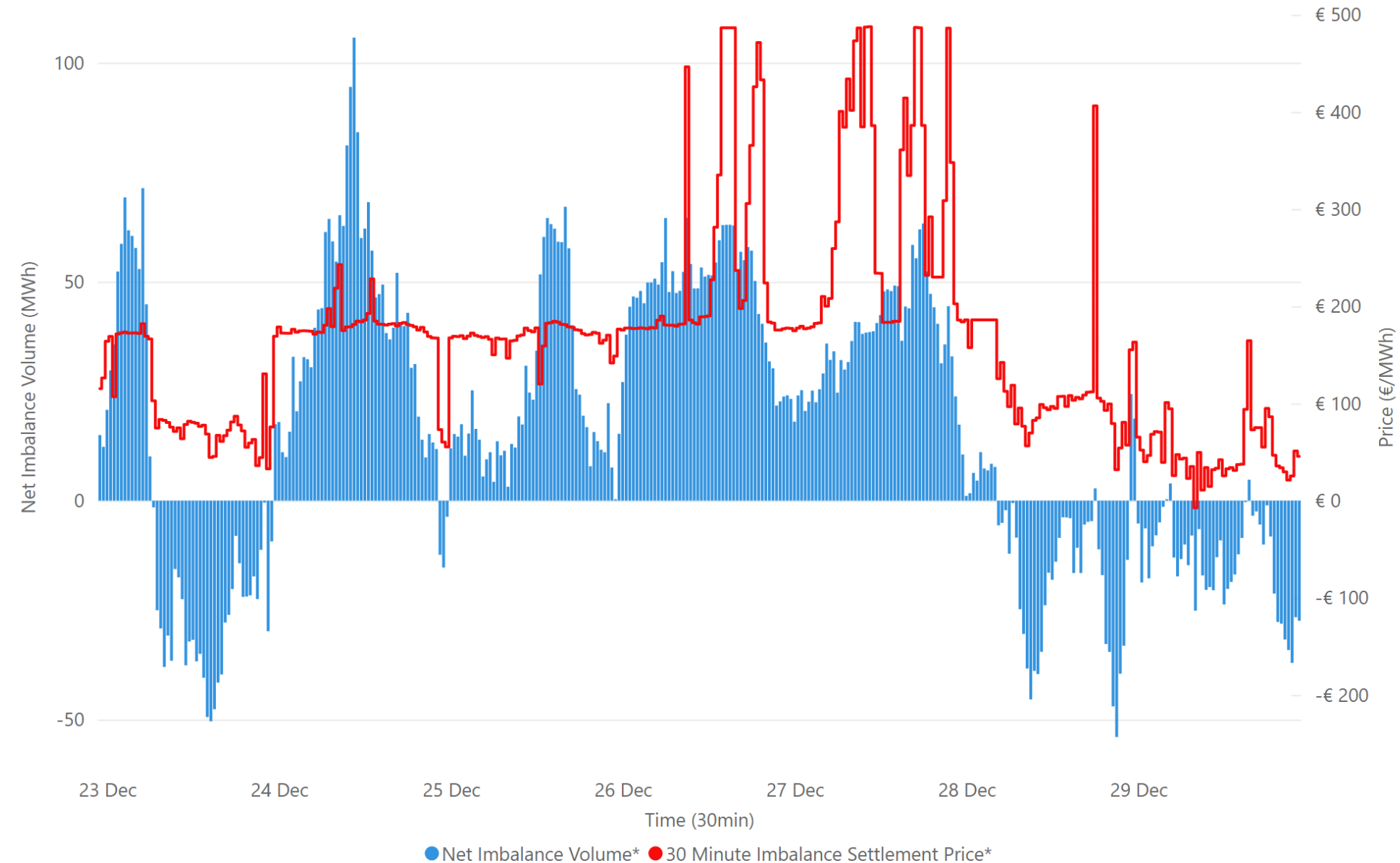
# Weekly Balancing Market 5 Minute Summary - Week Commencing 23 December 2024



€ 164.59  
Ave 5min Imbalance Price\*  
-€ 33.47  
Min 5min Imbalance Price\*  
€ 492.97  
Max 5min Imbalance Price\*

Source: \* SEMO

# Weekly Balancing Market 30 Minute Summary - Week Commencing 23 December 2024



€ 164.59  
Ave 30min Imbalance Price\*

€ 487.64  
Max 30min Imbalance Price\*

-€ 7.53  
Min 30min Imbalance Price\*

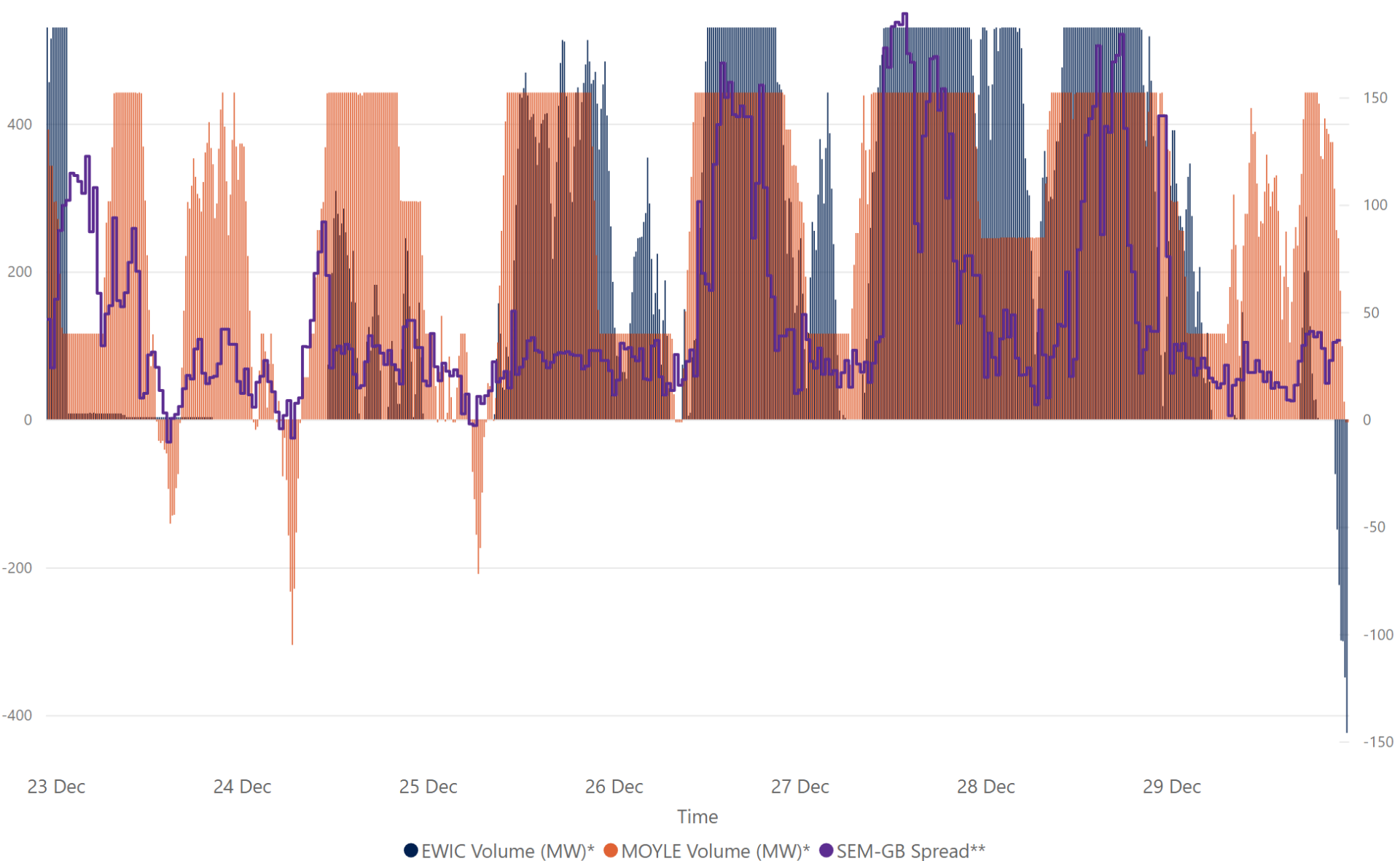
105.71  
Max Net Imbalance Volume\*

-53.98  
Min Net Imbalance Volume\*

Source: \* SEMO



# Weekly Interconnection Summary - Week Commencing 23 December 2024



191,443.00
Weekly MOYLE (MW) Import*
-3,115.00
Weekly MOYLE (MW) Export*
188,328.00
Weekly MOYLE (MW) NET*
147,080.00
Weekly EWIC (MW) Import*
-1,819.00
Weekly EWIC (MW) Export*
145,261.00
Weekly EWIC (MW) NET*

Sources:  
\* EirGrid  
\*\* SEMO, EPEX & Nordpool

# Weekly Wind Capacity Summary - Week Commencing 23 December 2024



3543  
Max Actual Wind (MW)\*  
408  
Min Actual Wind (MW)\*  
3643  
Max Forecast Wind (MW)\*  
495  
Min Forecast Wind (MW)\*

Sources:  
\* EirGrid

● 15 Minute Forecast Wind (MW)\* ● 15 Minute Actual Wind (MW)\*