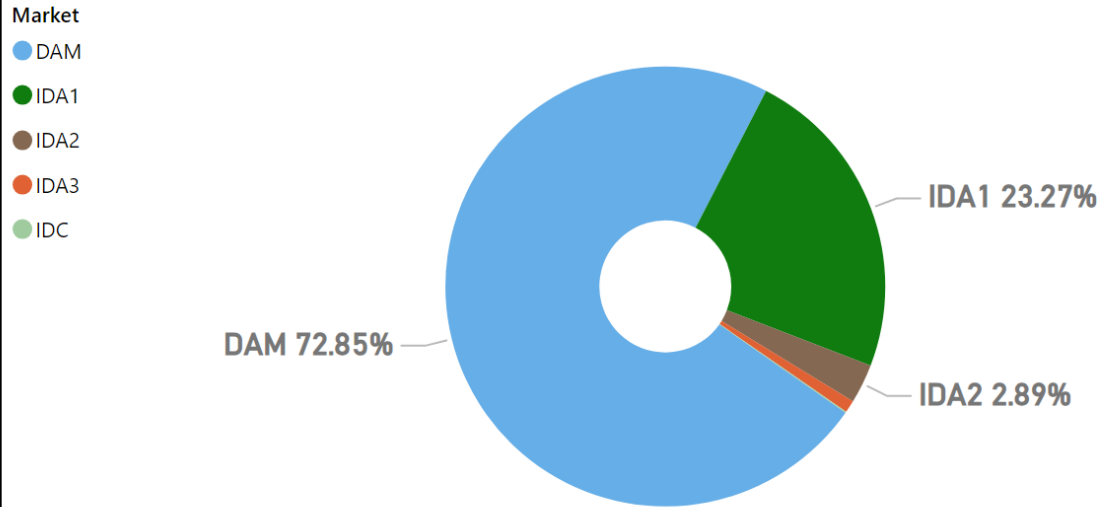


# MMU Weekly Market Summary Report

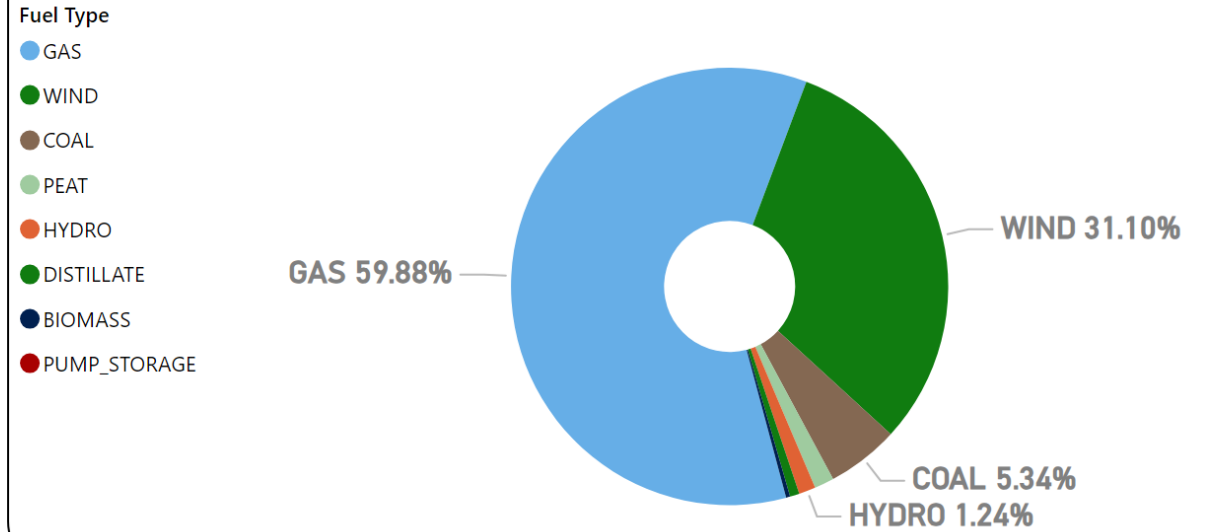
## - Week Commencing 06 January 2025

### Weekly Volume by Market



Source: SEMO PX

### Weekly Fuel Mix



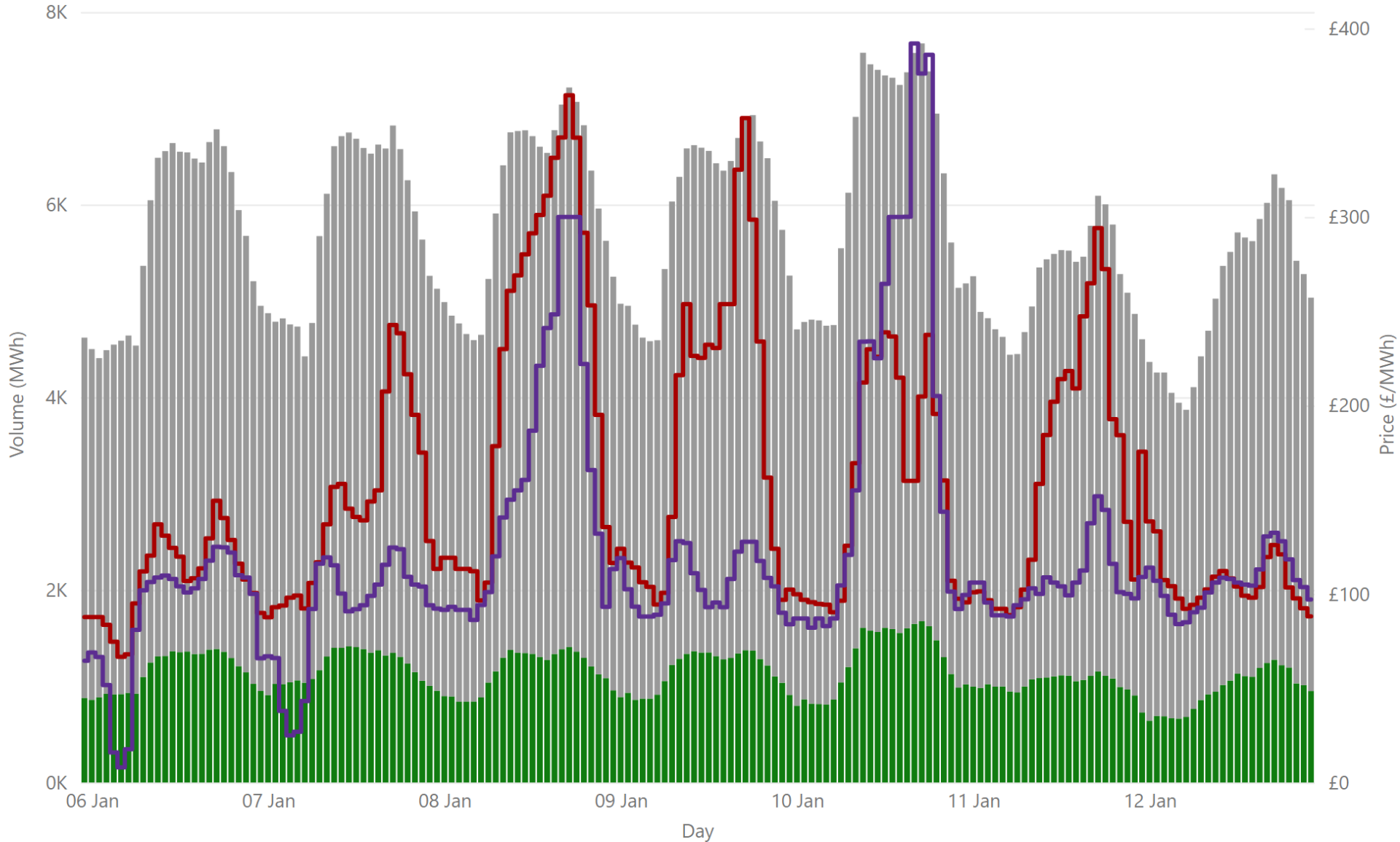
Source: SEMO PX

### Summary Table

| Date            | Daily System Demand (MWh)* | Daily Dam Price (£/MWh)** | Daily Actual Wind (MWh)* | Daily Average Gas Price (p/th)*** | Daily Average Coal Price (€/t)*** | Daily Average Carbon Price (€/t)*** |
|-----------------|----------------------------|---------------------------|--------------------------|-----------------------------------|-----------------------------------|-------------------------------------|
| 06 January 2025 | 132,973.50                 | 111.34                    | 58,606.50                | 117.00                            | 109.95                            | 72.23                               |
| 07 January 2025 | 136,738.00                 | 149.24                    | 34,225.75                | 120.35                            | 109.95                            | 72.20                               |
| 08 January 2025 | 145,514.75                 | 232.64                    | 14,385.50                | 116.83                            | 108.10                            | 70.31                               |
| 09 January 2025 | 145,031.50                 | 196.53                    | 13,375.00                | 115.68                            | 104.85                            | 71.50                               |
| 10 January 2025 | 139,959.75                 | 165.50                    | 64,462.75                | 115.05                            | 105.40                            | 72.79                               |
| 11 January 2025 | 125,420.50                 | 166.43                    | 22,303.00                | 115.05                            | 105.40                            | 72.79                               |
| 12 January 2025 | 119,701.50                 | 109.45                    | 69,838.50                | 115.05                            | 105.40                            | 72.79                               |

Sources: \* EirGrid \*\* SEMO PX \*\*\* Oil Market Journal

# Weekly Day Ahead Market Summary - Week Commencing 06 January 2025

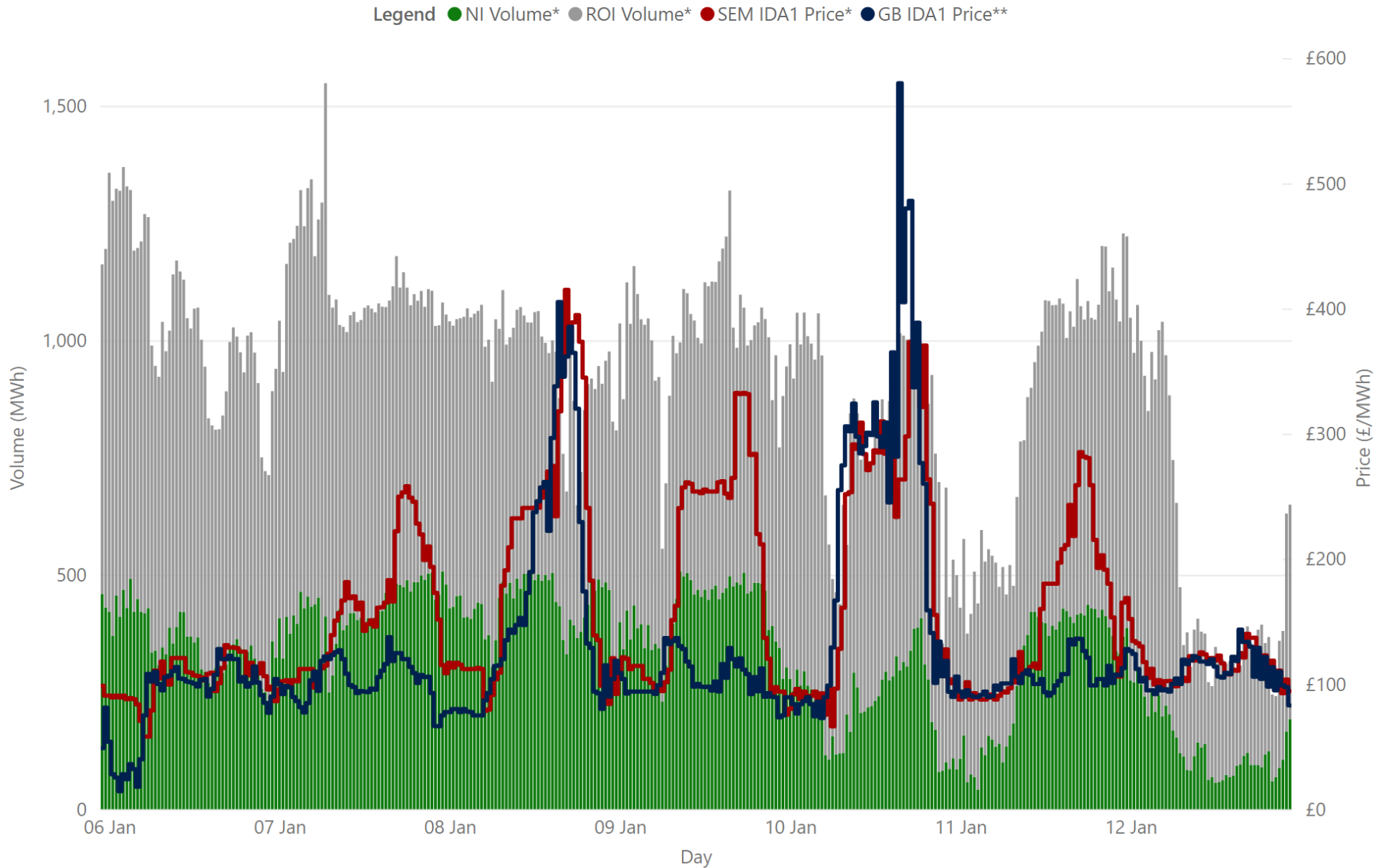


**£155.16**  
 Weekly Average SEM DAM Price\*  
**120.98**  
 Weekly Average GB EPEX Price\*  
**£156,617,127.57**  
 Weekly SEM DAM Market Value\*  
**960,026.60**  
 Weekly SEM DAM Volume MWh\*

Legend ● NI Volume\* ● ROI Volume\* ● SEM DAM Price\* ● GB EPEX Price\*

Sources:  
 \* SEMO PX  
 \*\* EPEX  
 \*\*\* Nordpool

# Weekly Intraday Auction 1 Summary - Week Commencing 06 January 2025



£159.29  
Weekly Average SEM IDA1 Price\*

£128.22  
Weekly Average GB IDA1 Price\*\*

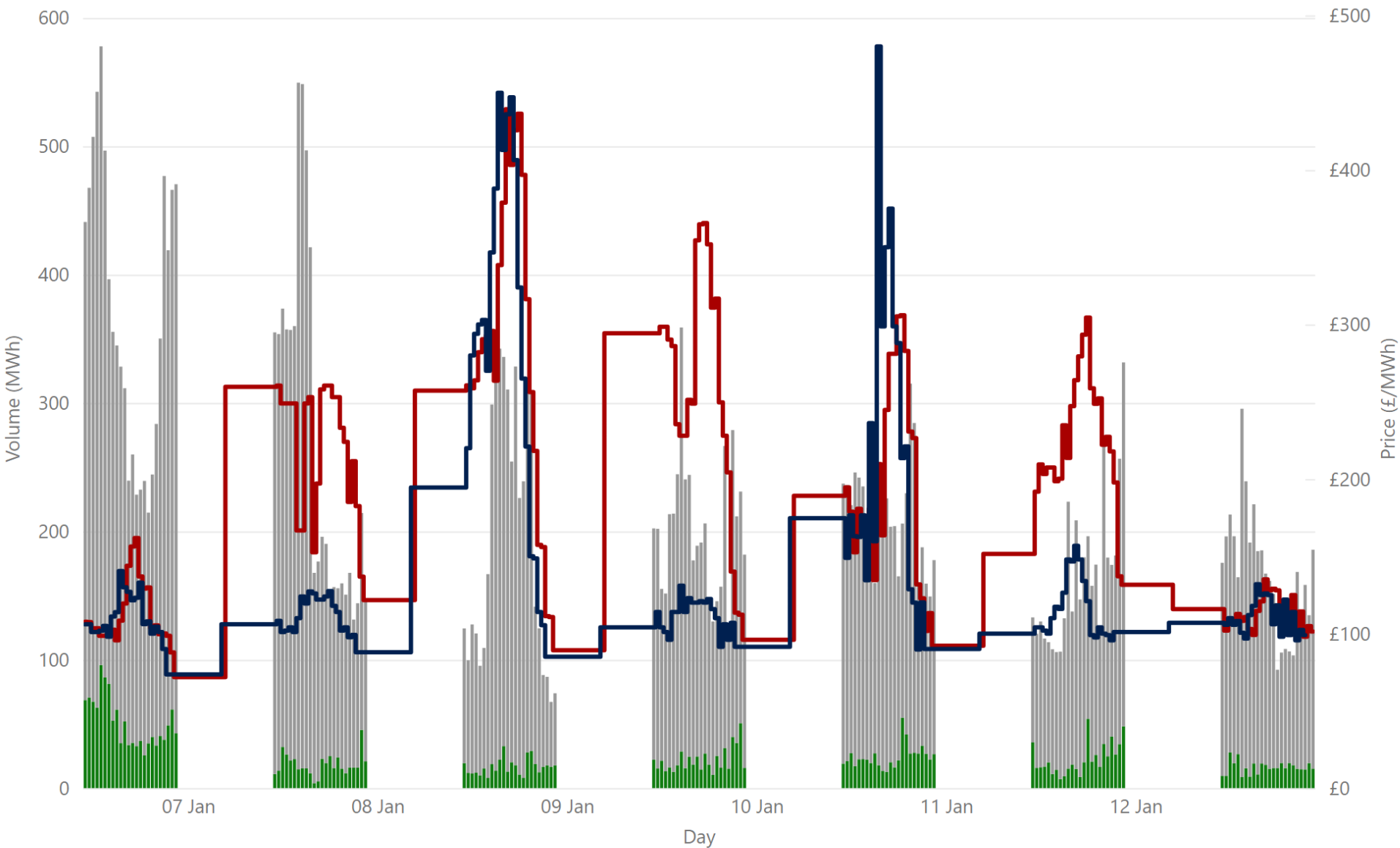
£50,061,465.81  
Weekly SEM IDA1 Market Value\*

306,662.30  
Weekly SEM DAM Volume MWh\*

Sources:  
\* SEMO PX  
\*\* EPEX

# Weekly Intraday Auction 2 Summary - Week Commencing 06 January 2025

Jurisdiction Volume ● NI Volume\* ● ROI Volume\* ● SEM IDA2 Price\* ● GB Price\*\*

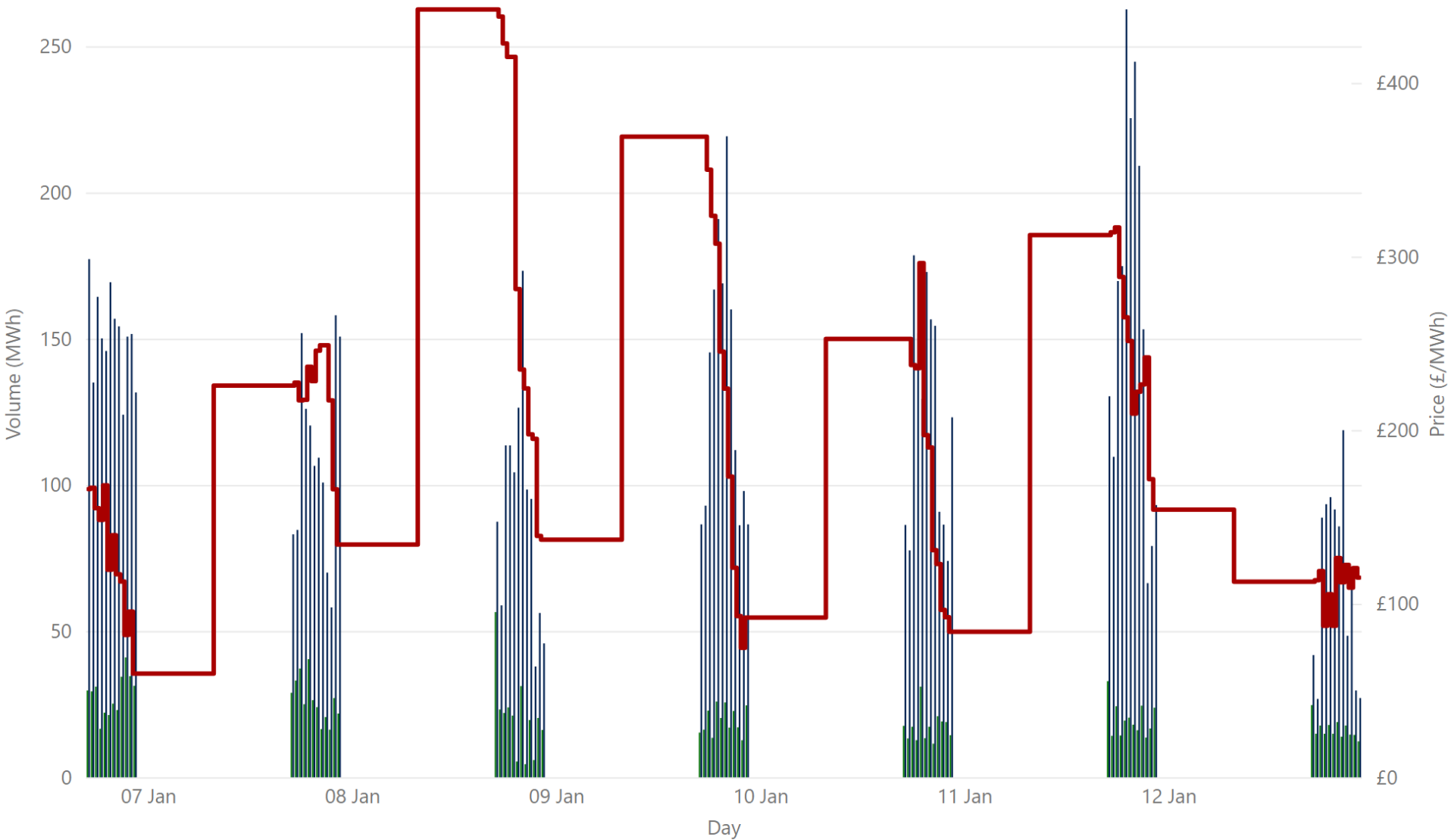


**£199.09**  
 Weekly Average SEM IDA2 Price\*  
**£149.42**  
 Weekly Average GB IDA2 Price\*\*  
**£7,427,214.06**  
 Weekly SEM IDA2 Market Value\*  
**38,122.00**  
 Weekly SEM IDA2 Volume MWh\*

Sources:  
 \* SEMO PX  
 \*\* EPEX

# Weekly Intraday Auction 3 Summary - Week Commencing 06 January 2025

Jurisdiction ● NI Volume\* ● ROI Volume\* ● SEM Price\*



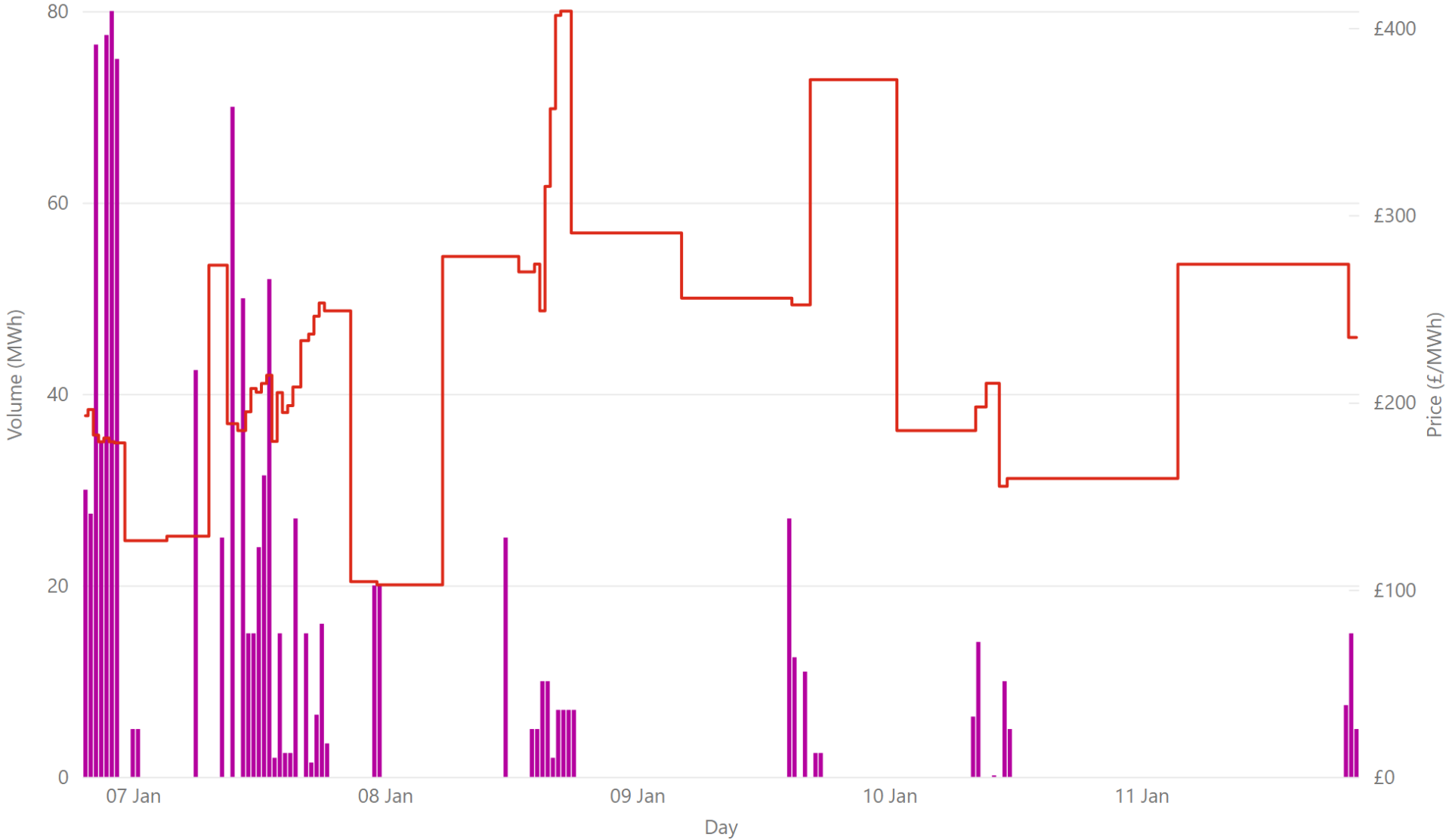
£201.40  
Weekly Average SEM IDA3 Price\*

£2,455,336.43  
Weekly SEM IDA3 Market Value\*

11,851.70  
Weekly SEM IDA3 Volume MWh\*

# Weekly Intraday Continuous Summary - Week Commencing 06 January 2025

● IDC Volume\* ● Weighted Average IDC Price\*



£229.65  
Weekly SEM IDC Average Price\*

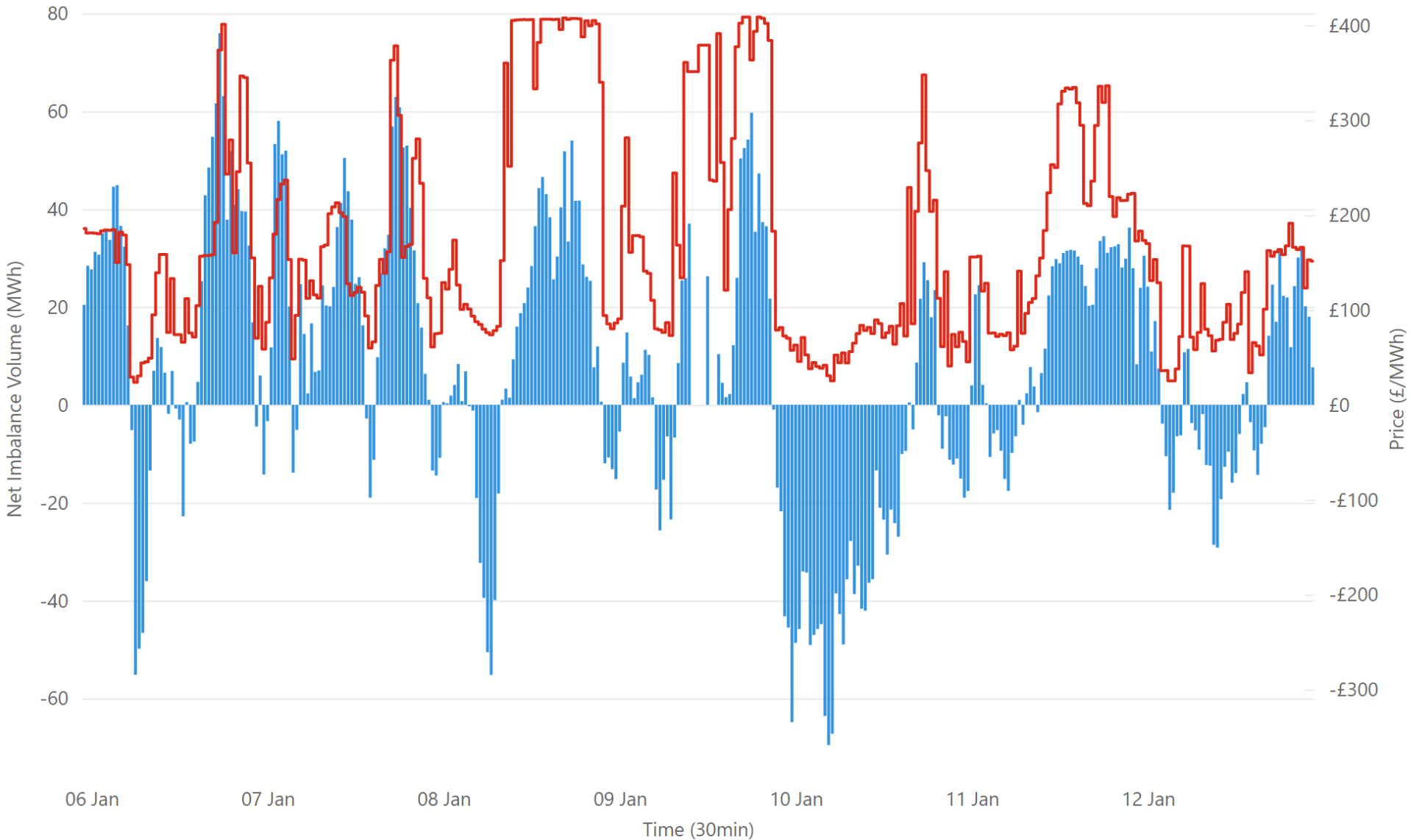
£414.90  
Weekly SEM IDC Max Price\*

£100.05  
Weekly SEM IDC Min Price\*

1,071.50  
Weekly SEM IDC Volume MWh\*

# Weekly Balancing Market 30 Minute Summary - Week Commencing 06 January 2025

● Net Imbalance Volume\* ● 30 Minute Imbalance Settlement Price\*



£170.63  
Ave 30min Imbalance Price\*

£408.63  
Max 30min Imbalance Price\*

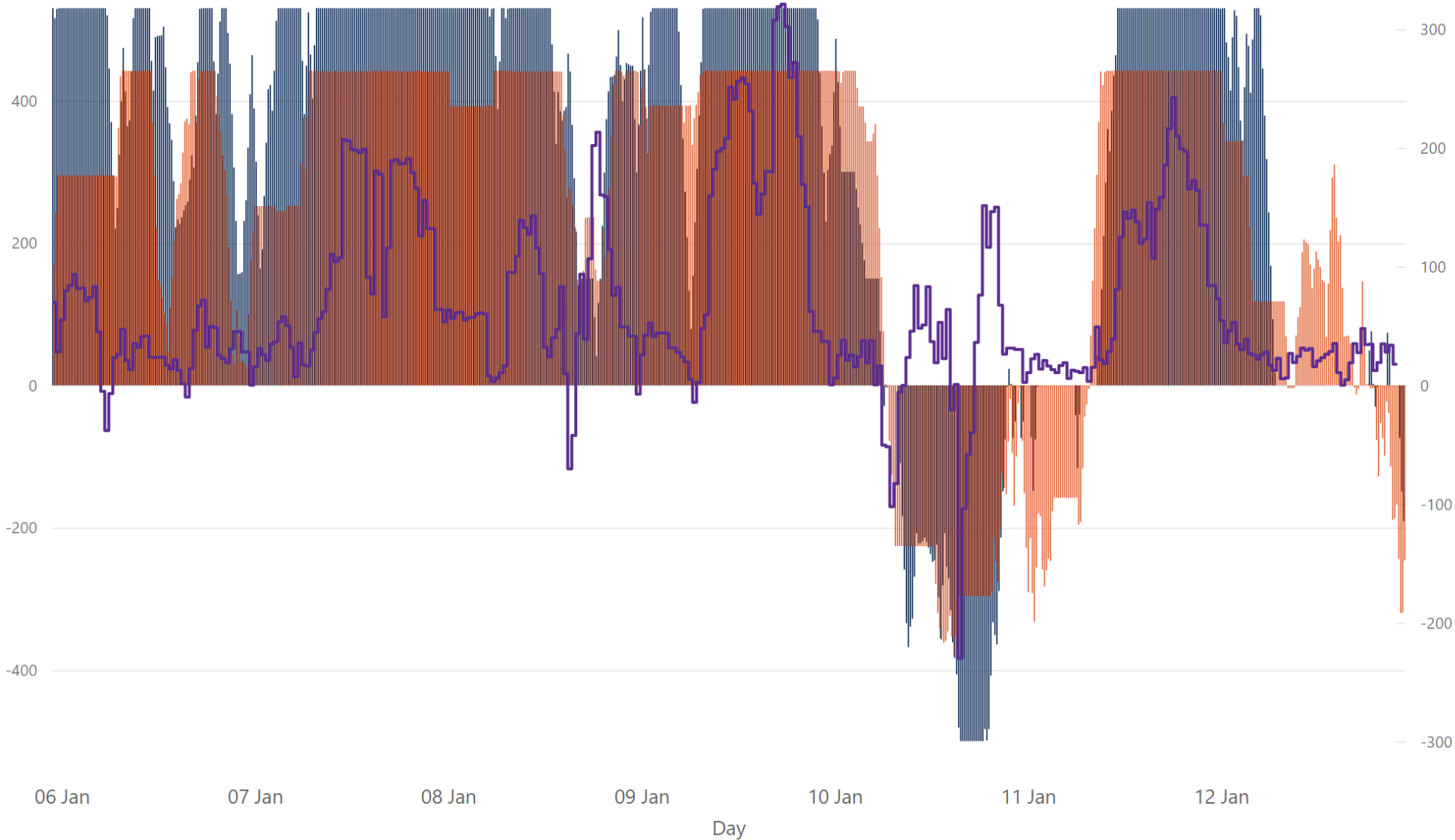
£23.66  
Min 30min Imbalance Price\*

75.94  
Max Net Imbalance Volume\*

-69.54  
Min Net Imbalance Volume\*

# Weekly Interconnection Summary - Week Commencing 06 January 2025

● EWIC Volume (MW)\* ● MOYLE Volume (MW)\* ● SEM-GB Spread\*\*



192,895.00  
Weekly MOYLE (MW) Import\*

-24,321.00  
Weekly MOYLE (MW) Export\*

168,574.00  
Weekly MOYLE (MW) NET\*

227,069.00  
Weekly EWIC (MW) Import\*

-19,200.00  
Weekly EWIC (MW) Export\*

207,869.00  
Weekly EWIC (MW) NET\*

Sources:  
\* EirGrid  
\*\* SEMO, EPEX & Nordpool



# Weekly Wind Capacity Summary - Week Commencing 06 January 2025

● 15 Minute Forecast Wind (MW)\* ● 15 Minute Actual Wind (MW)\*



4020  
Max Actual Wind (MW)\*

86  
Min Actual Wind (MW)\*

4485  
Max Forecast Wind (MW)\*

131  
Min Forecast Wind (MW)\*