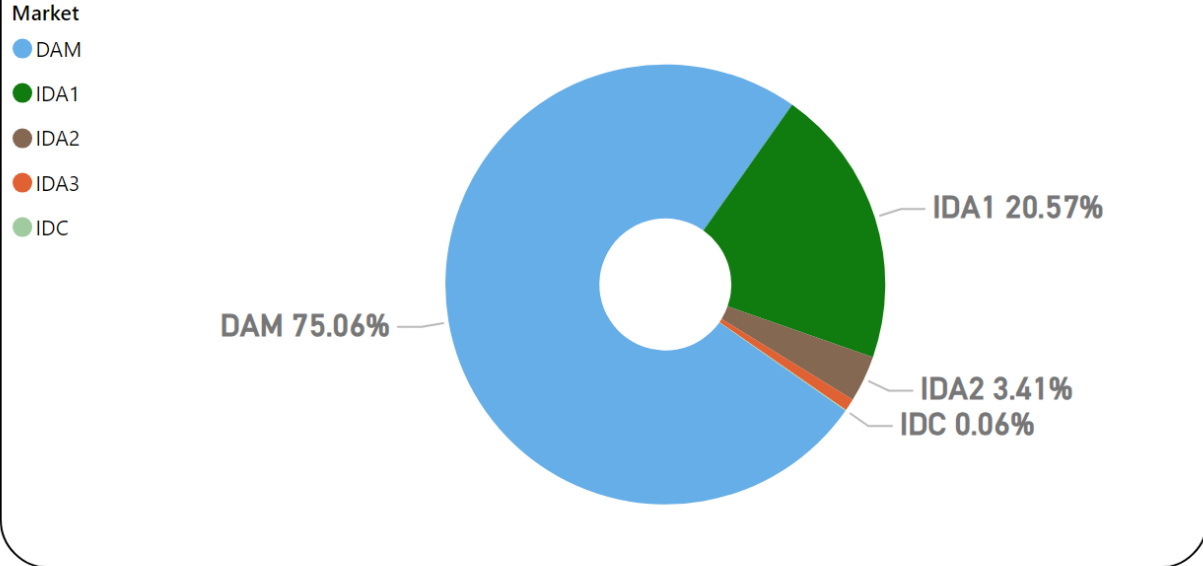


MMU Weekly Market Summary Report

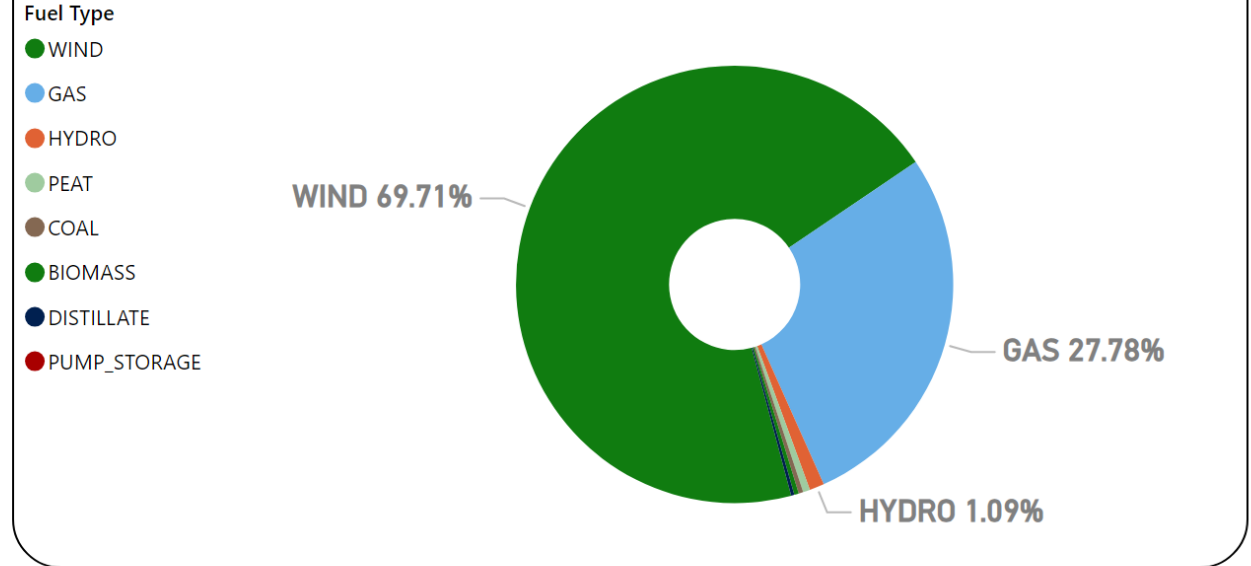
- Week Commencing 17 February 2025

Weekly Volume by Market



Source: SEMO PX

Weekly Fuel Mix



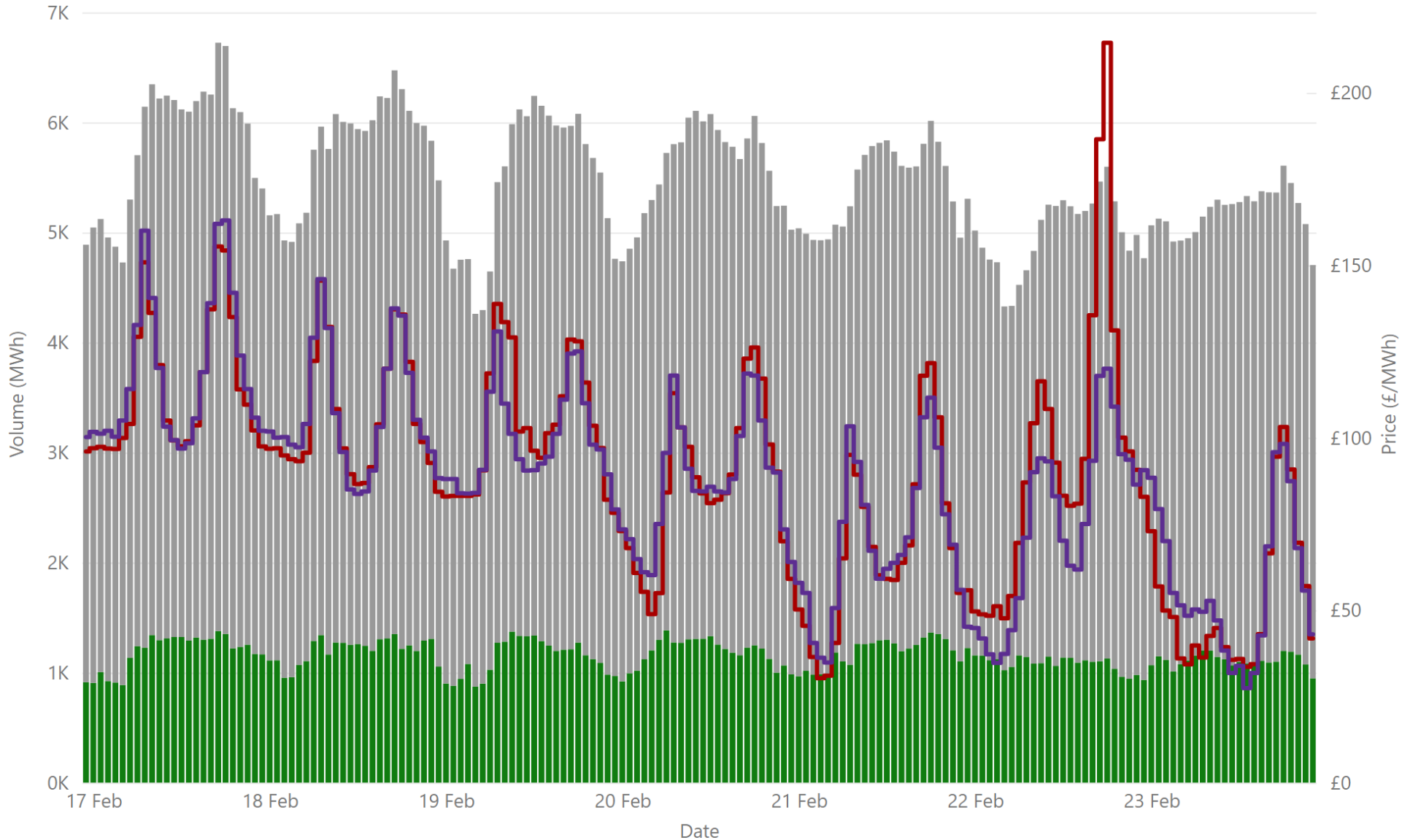
Source: SEMO PX

Summary Table

Date	Daily System Demand (MWh)*	Daily Dam Price (£/MWh)**	Daily Actual Wind (MWh)*	Daily Average Gas Price (p/th)***	Daily Average Coal Price (€/t)***	Daily Average Carbon Price (€/t)***
17 February 2025	127,737.75	116.19	90,286.50	117.78	99.50	75.04
18 February 2025	130,082.75	106.56	97,783.00	118.40	101.15	73.58
19 February 2025	126,960.75	104.21	83,994.50	113.55	100.75	71.78
20 February 2025	122,364.75	87.30	95,444.50	112.70	100.40	70.85
21 February 2025	121,214.75	69.37	82,341.50	110.25	99.75	72.14
22 February 2025	110,312.00	94.59	54,826.75	110.25	99.75	72.14
23 February 2025	110,681.00	53.99	95,195.00	110.25	99.75	72.14

Sources: * EirGrid ** SEMO PX *** Oil Market Journal

Weekly Day Ahead Market Summary - Week Commencing 17 February 2025



£89.29
 Weekly Average SEM DAM Price*

87.77
 Weekly Average GB EPEX Price*

£83,467,592.41
 Weekly SEM DAM Market Value*

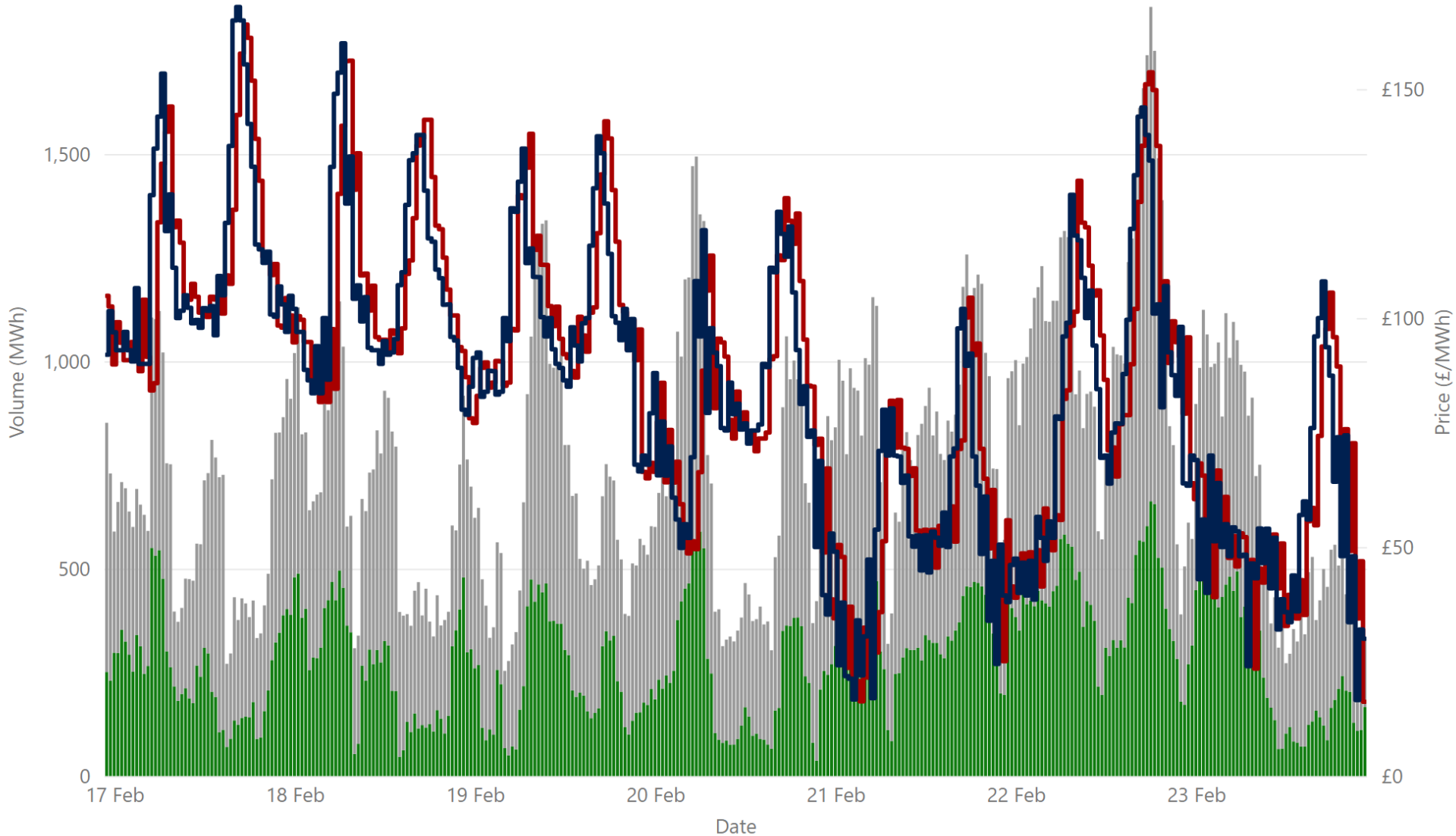
917,809.10
 Weekly SEM DAM Volume MWh*

Legend ● NI Volume* ● ROI Volume* ● SEM DAM Price* ● GB EPEX Price*

Sources:
 * SEMO PX
 ** EPEX
 *** Nordpool

Weekly Intraday Auction 1 Summary - Week Commencing 17 February 2025

Legend ● NI Volume* ● ROI Volume* ● SEM IDA1 Price* ● GB IDA1 Price**



£85.76
Weekly Average SEM IDA1 Price*

£85.03
Weekly Average GB IDA1 Price**

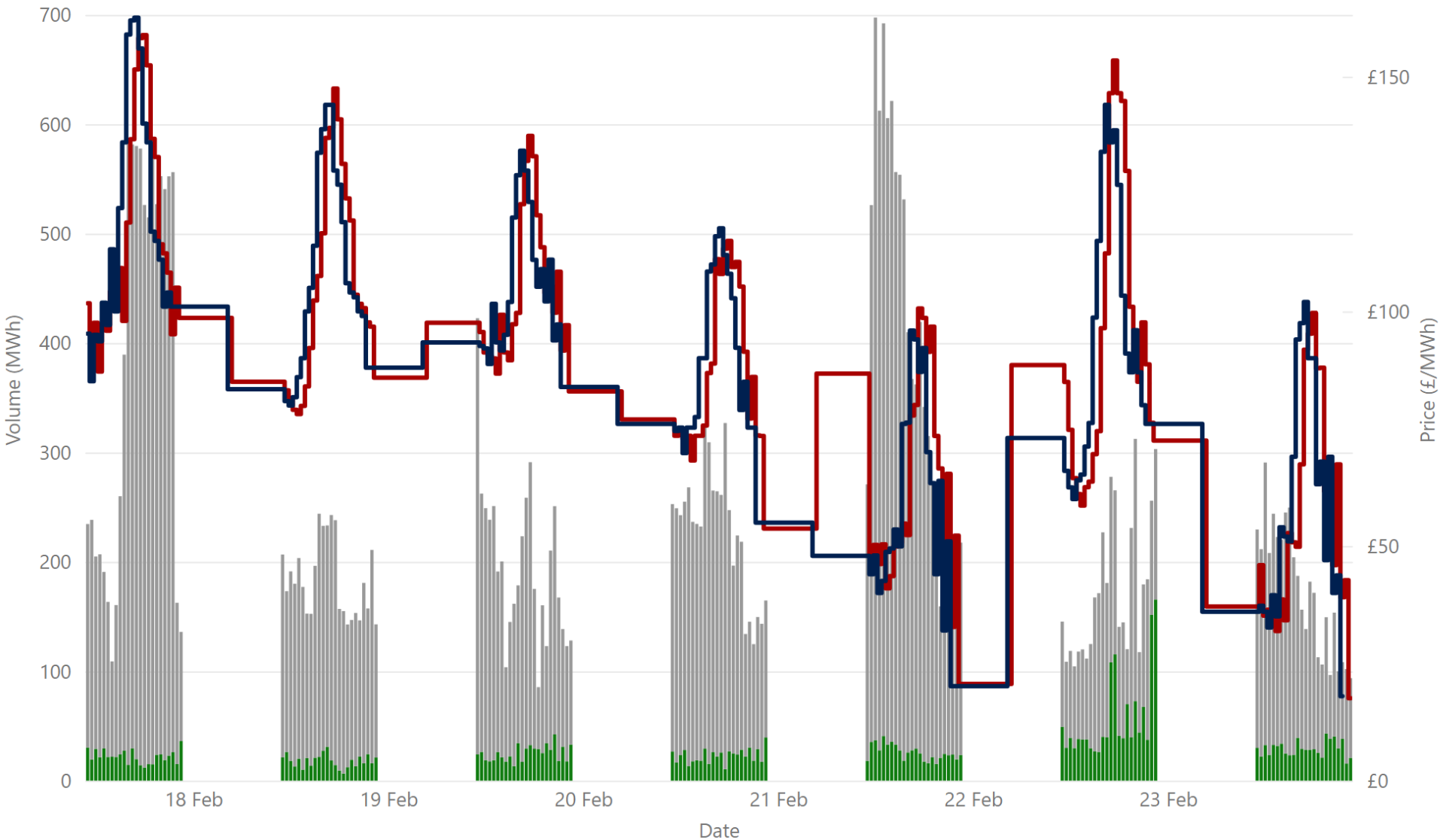
£21,359,850.75
Weekly SEM IDA1 Market Value*

251,531.40
Weekly SEM DAM Volume MWh*

Sources:
* SEMO PX
** EPEX

Weekly Intraday Auction 2 Summary - Week Commencing 17 February 2025

Jurisdiction Volume ● NI Volume* ● ROI Volume* ● SEM IDA2 Price* ● GB Price**

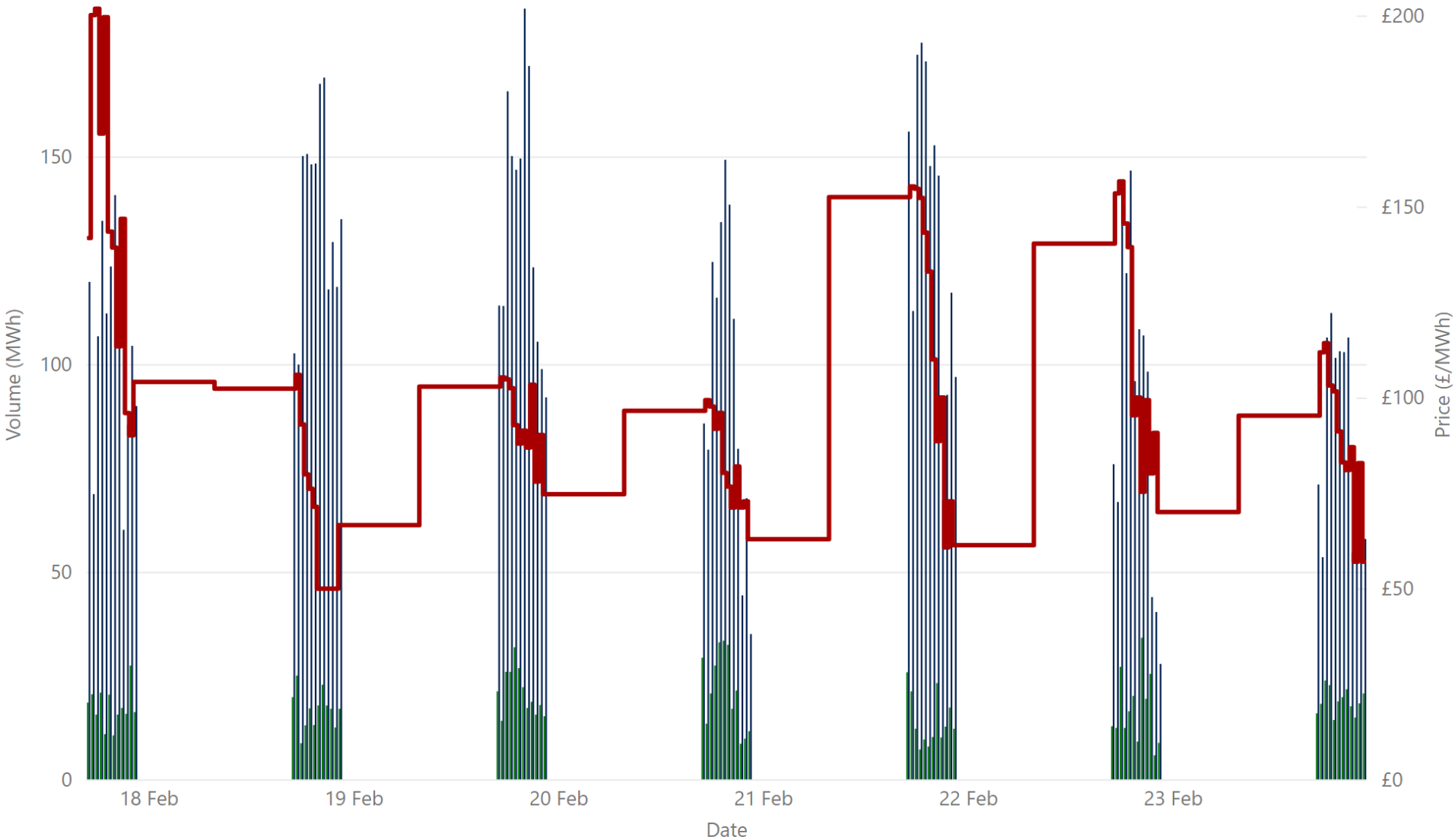


£88.46
 Weekly Average SEM IDA2 Price*
£89.66
 Weekly Average GB IDA2 Price**
£3,746,402.11
 Weekly SEM IDA2 Market Value*
41,703.50
 Weekly SEM IDA2 Volume MWh*

Sources:
 * SEMO PX
 ** EPEX

Weekly Intraday Auction 3 Summary - Week Commencing 17 February 2025

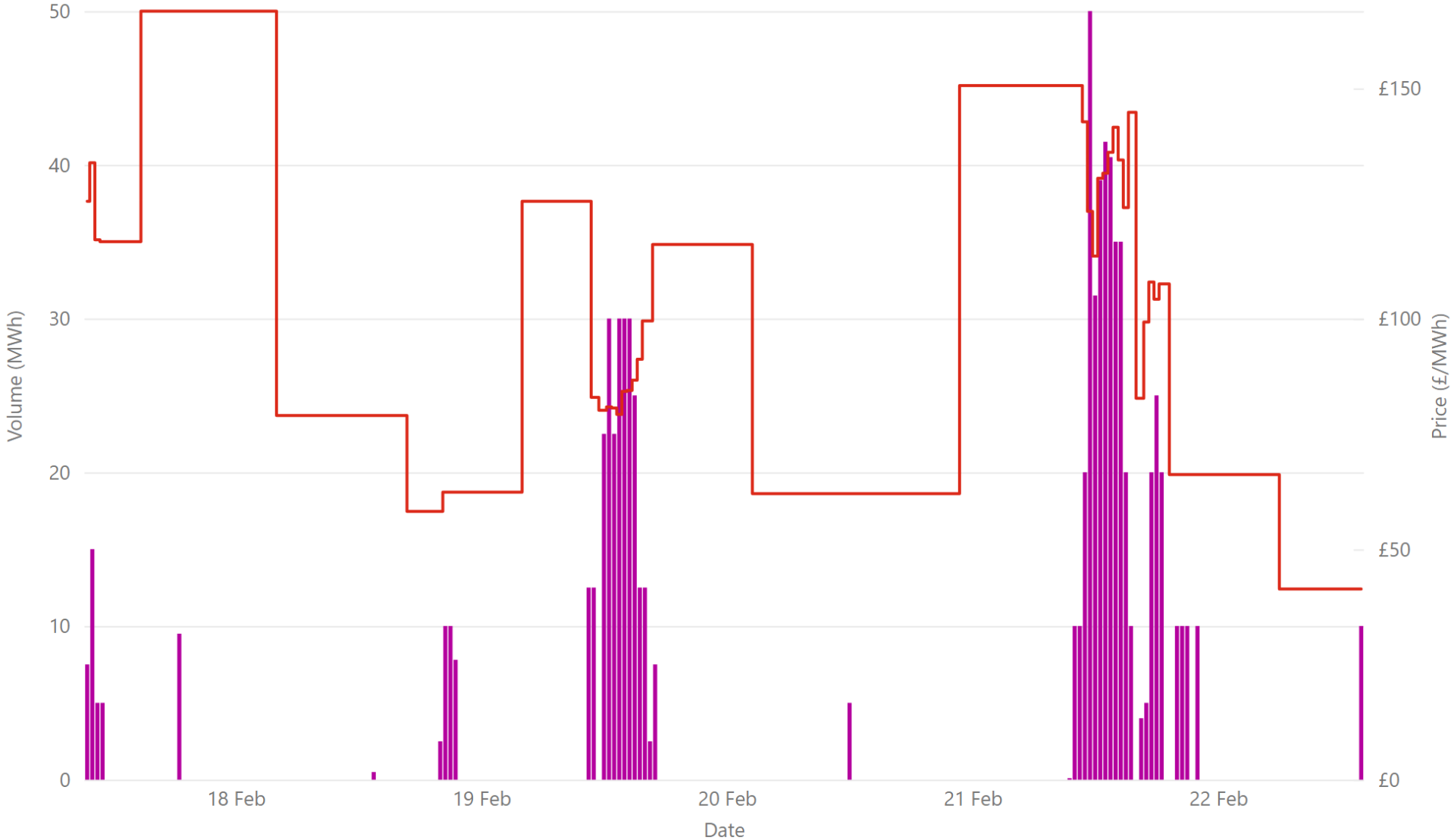
Jurisdiction ● NI Volume* ● ROI Volume* ● SEM Price*



£101.22
Weekly Average SEM IDA3 Price*
£1,114,255.12
Weekly SEM IDA3 Market Value*
10,877.10
Weekly SEM IDA3 Volume MWh*

Weekly Intraday Continuous Summary - Week Commencing 17 February 2025

● IDC Volume* ● Weighted Average IDC Price*



£102.56
Weekly SEM IDC Average Price*

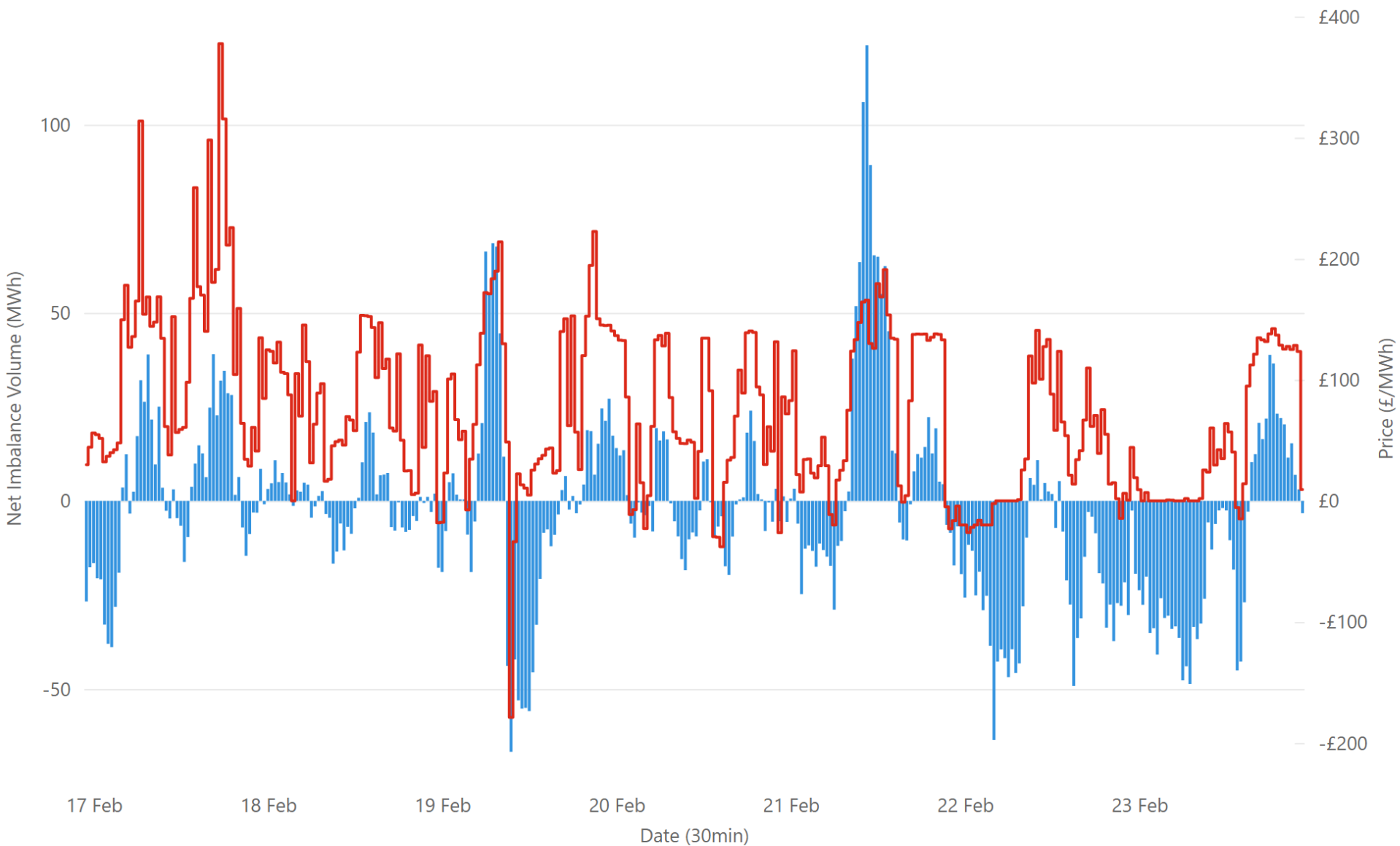
£166.76
Weekly SEM IDC Max Price*

£41.38
Weekly SEM IDC Min Price*

794.40
Weekly SEM IDC Volume MWh*

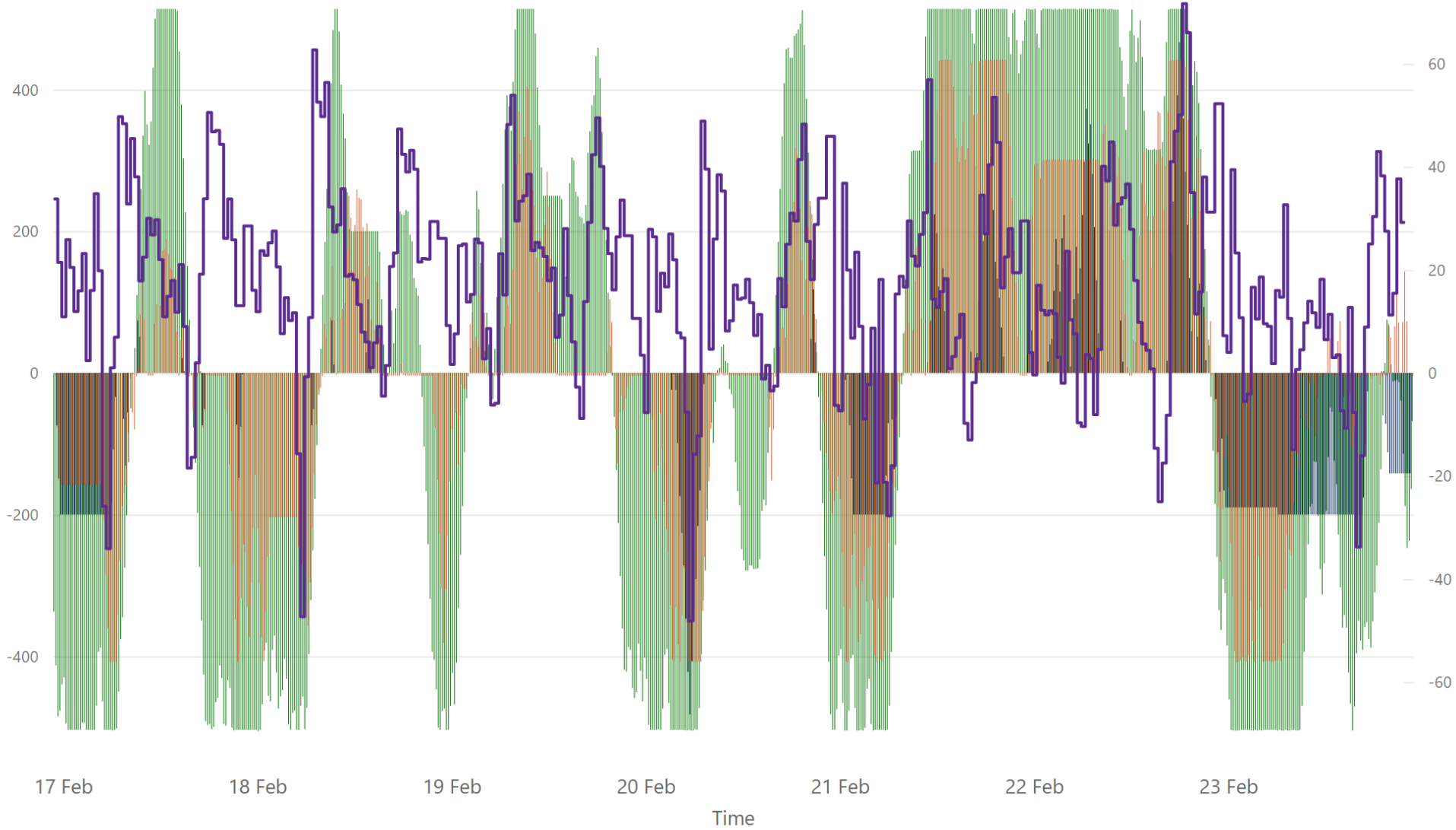
Weekly Balancing Market 30 Minute Summary - Week Commencing 17 February 2025

● Net Imbalance Volume* ● 30 Minute Imbalance Settlement Price*



£74.90
Ave 30min Imbalance Price*
£377.56
Max 30min Imbalance Price*
-£178.89
Min 30min Imbalance Price*
121.08
Max Net Imbalance Volume*
-66.70
Min Net Imbalance Volume*

Weekly Interconnection Summary - Week Commencing 17 February 2025



57,201.00	Weekly MOYLE (MW) Import*
-54,442.00	Weekly MOYLE (MW) Export*
2,759.00	Weekly MOYLE (MW) NET*
12,195.00	Weekly EWIC (MW) Import*
-29,886.00	Weekly EWIC (MW) Export*
-17,691.00	Weekly EWIC (MW) NET*
117,537.00	Weekly Greenlink (MW) Import***
-126,313.00	Weekly Greenlink (MW) Export***
-8,776.00	Weekly Greenlink (MW) Net***

Sources:
 * EirGrid
 ** SEMO, EPEX & Nordpool

● GREENLINK Volume (MW)*** ● EWIC Volume (MW)* ● MOYLE Volume (MW)* ● SEM-GB Spread**

Weekly Wind Capacity Summary - Week Commencing 17 February 2025

● 15 Minute Forecast Wind (MW)* ● 15 Minute Actual Wind (MW)*



4564
Max Actual Wind (MW)*
1607
Min Actual Wind (MW)*
5561
Max Forecast Wind (MW)*
1751
Min Forecast Wind (MW)*